



Product Catalog

kraftsmancabinetry.com
412-506-8688



Table of Contents

Kitchen Cabinet Styles	1 - 6
Wall Cabinets	7 - 9
Base Cabinets.....	10 - 12
Utility Cabinets	13 -14
Accessories.....	15 - 17
Vanity Cabinets.....	17 -19
Accessories & Panels	20 -21
Fillers & Mouldings.....	22 -23
Miscellaneous	23
Universal Accessories	24
Product Availability	25-32

Kraftsman Cabinetry are durable, attractive, and offer vast amounts of kitchen design possibilities. They are shipped and delivered quickly from centrally located warehouses. These quality cabinets allow you to offer value-pricing to your customers without sacrificing quality.

Kraftsman Cabinetry Features

**1. Face Frame**

Solid Wood

2. Door Hinges

DTC 6 Way Adjustable, Soft Close

3. Box Construction

Top, Floor, Sides & Back 1/2" Plywood

4. Shelves

Adjustable 3/4" Plywood

5. Drawer Slides

Undermount, Full Extension, Metal, Soft Close

6. Drawer Box

3/4" Solid Maple, Dovetailed

7. Butt Style Doors

Allows for easier access

Kraftsman Cabinetry offers a variety of kitchen cabinet styles to choose from, providing beauty and convenience. From the timeless Summit White Shaker style to classic West Point Grey cabinets, the collection has something for everyone.

These Prefix Codes Show Item Availability For Each Style In The Following Pages



Summit White
Shaker
WS



Hickory
Shaker
HS



Summit Platinum
Shaker
PS



Aspen
White
ASP



West Point
Grey
WP



Florence Sage
FS



Modern Black
Shaker
MBS



Cambridge
Shaker
CS



Winchester
Grey
WG

Summit White Shaker • WS


With simple flat panel doors, sturdy construction and clean lines, Summit White Shaker Style Kitchen Cabinets go well with classic, contemporary or modern designs. These shaker doors are composed of HDF to ensure the highest quality finish.

- Wood Species: Painted
- Faceframe: Solid Wood
- Door Type: Shaker Style [HDF Construction]
- Cabinet Box: 1/2" Plywood
- Drawer Glide: Undermount Soft Close
- Drawer Head: 5-piece Matching Profile
- Drawer Box: 3/4" Solid Wood Dovetail
- Shelves: 3/4" Adjustable Plywood Shelves
- Door Hinges: Soft Close 6-Way Adjustable Concealed
- Interior/Exterior: Matching White Shaker
- Full Overlay Design

Hickory Shaker • HS


Hickory Shaker kitchens feature strong grain patterns, color changes, knots and swirled grains formed to the simplicity of the Shaker style. This rustic look is ideal for portraying an old world vibe.

- Wood Species: American Hickory
- Face Frame: Solid Wood
- Door Type: Solid Hickory Shaker Style
- Cabinet Box: 1/2" Plywood
- Drawer Glide: Undermount Soft Close
- Drawer Head: Solid Slab
- Drawer Box: 3/4" Solid Wood Dovetail
- Shelves: 3/4" Adjustable Plywood Shelves
- Door Hinges: Soft Close 6-Way Adjustable Concealed
- Cabinet Interior/Exterior: Natural Birch
- Full Overlay Design

***FOR HICKORY SHAKER AND WINCHESTER GREY: Exposed ends require skins to give finished appearance.

Summit Platinum Shaker • PS

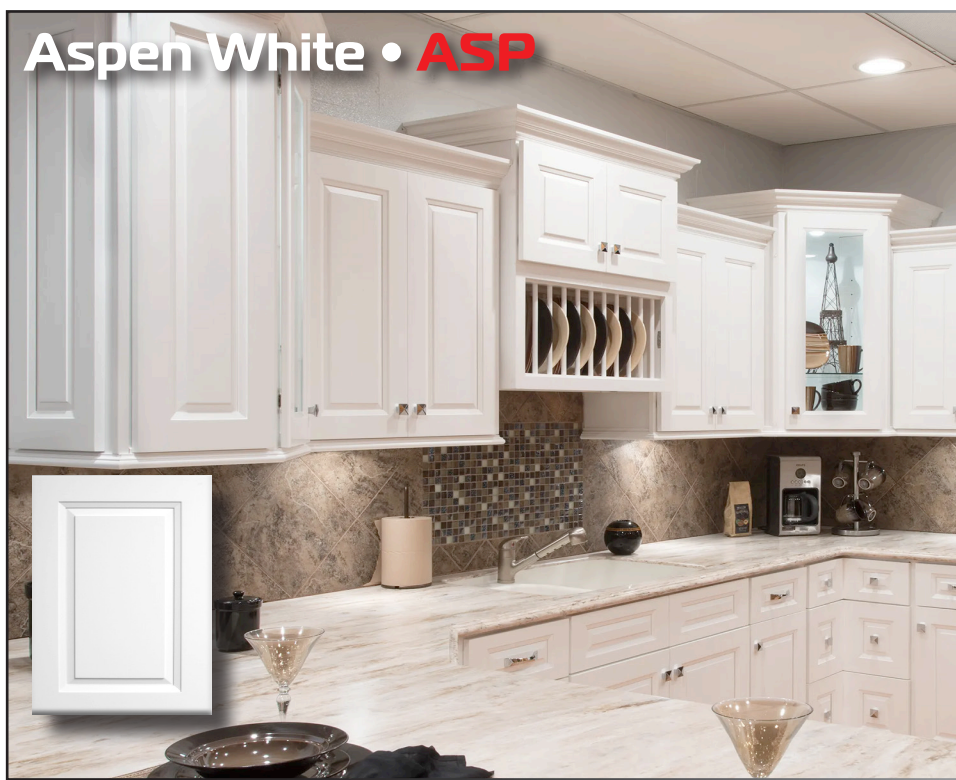

Summit Platinum Shaker Cabinets boast a simple shaker design with a classic steel-grey paint.

- Wood Species: Painted
- Face Frame: Solid Wood
- Door Type: Shaker Style [HDF Construction]
- Box Construction: 1/2" Plywood
- Drawer Glide: Undermount Soft Close
- Drawer Head: 5-piece Matching Profile
- Drawer Box: 3/4" Solid Wood Dovetail
- Shelves: 3/4" Adjustable Plywood Shelves
- Door Hinges: Soft Close 6-Way Adjustable Concealed
- Interior/Exterior: Matching Platinum Shaker
- Full Overlay Design

West Point Grey • WP


A flat panel door with a decorative edge profile West Point Grey Cabinets are a clean, trendy option that warms any space.

- Wood Species: Solid Maple / Birch
- Face Frame: Solid Wood
- Door Type: Flat Panel w/ Decorative Edge
- Box Construction: 1/2" Plywood
- Drawer Glide: Undermount Soft Close
- Drawer Head: 5-piece Matching Profile
- Drawer Box: 3/4" Solid Wood Dovetail
- Shelves: 3/4" Adjustable Plywood Shelves
- Door Hinges: Soft Close 6-Way Adjustable Concealed
- Interior/Exterior: Matching West Point Grey
- Full Overlay Design



Aspen White • **ASP**

With a clean raised center panel design, our Aspen White collection is ideal for creating an exquisite modern look.

- Wood Species: Painted
- Face Frame: Solid Wood
- Door Type: Raised Panel [HDF Construction]
- Box Construction: 1/2" Plywood
- Drawer Glide: Undermount Soft Close
- Drawer Head: 5-piece Matching Profile
- Drawer Box: 3/4" Solid Wood Dovetail
- Shelves: 3/4" Adjustable Plywood Shelves
- Door Hinges: Soft Close 6-Way Adjustable Concealed
- Interior/Exterior: Matching Aspen White
- Full Overlay Design



Winchester Grey • **WG**

Winchester Grey Cabinets are a clean, trendy option that warms any space. With a flat panel door design and decorative edge, Winchester Grey's soft undertones reflect natural wood grains to give a contemporary feel.

- Wood Species: Solid Maple / Birch
- Face Frame: Solid Wood
- Door Type: Flat Panel w/ Decorative Edge
- Box Construction: 1/2" Plywood
- Drawer Glide: Undermount Soft Close
- Drawer Head: 5-piece Matching Profile
- Drawer Box: 3/4" Solid Wood Dovetail
- Shelves: 3/4" Adjustable Plywood Shelves
- Door Hinges: Soft Close 6-Way Adjustable Concealed
- Cabinet Exterior/Interior: Natural Birch
- Full Overlay Design

***FOR HICKORY SHAKER AND WINCHESTER GREY: Exposed ends require skins to give finished appearance.

Florence Sage • FS


The Florence Sage style features a light, muted green finish that exudes a sense of tranquility and modernity. The flat-panel doors and subtle detailing, creating a stylish and inviting atmosphere for a modern kitchen setting.

- Wood Species: Solid Maple / Birch
- Face Frame: Solid Wood
- Door Type: Shaker Style (HDF Construction)
- Cabinet Box Construction: 1/2 inch Solid Plywood
- Drawer Glide: Undermount Soft Close Drawers
- Drawer Head: 5-piece, Matches Door Profile
- Drawer Box: 3/4 inch Solid Wood Dovetail
- Shelves: 3/4 inch Adjustable Shelves
- Door Hinges: Soft Close 6 Way Adjustable Concealed
- Interior/Exterior: Matching Florence Sage

Modern Black Shaker • MBS


The deep black finish, combined with the classic Shaker design creates a bold and timeless aesthetic. This style effortlessly blends modern elegance with a traditional silhouette, making it a striking choice for those seeking a sleek and impactful kitchen design.

- Wood Species: Solid Maple / Birch
- Face Frame: Solid Wood
- Door Type: Shaker Style (HDF Construction)
- Cabinet Box Construction: 1/2 inch Solid Plywood
- Drawer Glide: Undermount Soft Close Drawers
- Drawer Head: 5-piece, Matches Door Profile
- Drawer Box: 3/4 inch Solid Wood Dovetail
- Shelves: 3/4 inch Adjustable Shelves
- Door Hinges: Soft Close 6 Way Adjustable Concealed
- Interior/Exterior: Natural Birch/ Matching Black



Cambridge Shaker • CS

The Cambridge Shaker style has recessed panel door, creating a versatile and sophisticated aesthetic. With a warm and inviting finish, this style brings a sense of traditional craftsmanship your kitchen space.

- Wood Species: Solid Maple / Birch
- Face Frame: Solid Wood
- Door Type: Flat Panel w/Decorative Edge
- Cabinet Box Construction: 1/2 inch Solid Plywood
- Drawer Glide: Undermount Soft Close Drawers
- Drawer Head: 5-piece, Matches Door Profile
- Drawer Box: 3/4 inch Solid Wood Dovetail
- Shelves: 3/4 inch Adjustable Shelves
- Door Hinges: Soft Close 6 Way Adjustable Concealed
- Interior/Exterior: Matching Cambridge Shaker

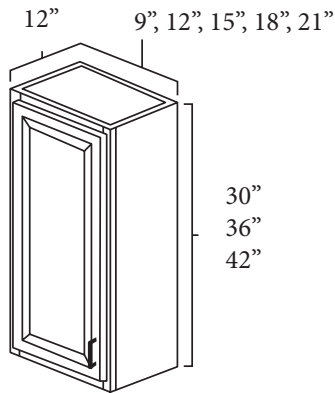


Wall Cabinets

Single Door Wall

1 Door Wall Cabinets

W0930	9 x 30
W0936	9 x 36
W0942	9 x 42
W1230	12 x 30
W1236	12 x 36
W1242	12 x 42
W1530	15 x 30
W1536	15 x 36
W1542	15 x 42
W1830	18 x 30
W1836	18 x 36
W1842	18 x 42
W2130	21 x 30
W2136	21 x 36
W2142	21 x 42



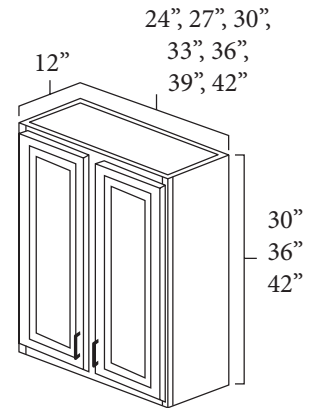
Specifications:

- 30" and 36" wall cabinets have two adjustable shelves.
- 42" tall cabinets have three adjustable shelves.
- Doors may be replaced with corresponding glass doors
- Availability pg. 25

Double Door Wall

2 Door Wall Cabinets

W2430	24 x 30
W2436	24 x 36
W2442	24 x 42
W2730	27 x 30
W2736	27 x 36
W2742	27 x 42
W3030	30 x 30
W3036	30 x 36
W3042	30 x 42
W3330	33 x 30
W3336	33 x 36
W3342	33 x 42
W3630	36 x 30
W3636	36 x 36
W3642	36 x 42
W3930	39 x 30
W3936	39 x 36
W3942	39 x 42
W4230	42 x 30
W4236	42 x 36
W4242	42 x 42



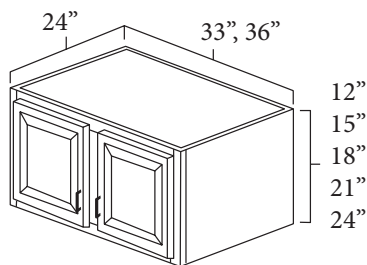
Specifications:

- 30" and 36" wall cabinets have two adjustable shelves.
- 42" tall cabinets have three adjustable shelves.
- Butt doors on cabinets 24" - 36" wide.
- Doors may be replaced with corresponding set of double glass doors (see page 15).
- Availability pg. 25, 26

Refrigerator Wall

Refrigerator Wall Cabinets

WR3315	33 x 15
WR3324	33 x 24
WR3612	36 x 12
WR3615	36 x 15
WR3618	36 x 18
WR3621	36 x 21
WR3624	36 x 24



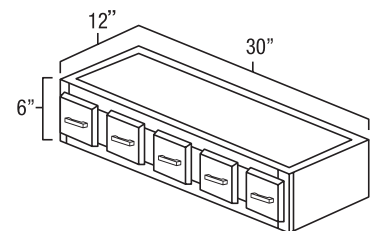
Specifications:

- 24" tall cabinets have one adjustable shelf.
- 33" wide cabinets are available only in 15" and 24" height.
- Butt doors are standard.
- Availability pg. 27

Spice Drawers Wall

Spice Drawer Wall Cab

WSC30	6 x 30
-------	--------



Specifications:

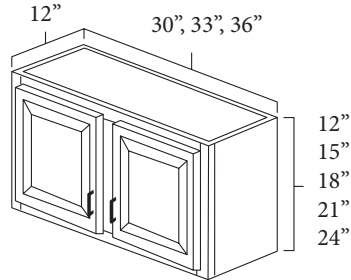
- Finished Interior.
- Can be used without the drawers as a wine rack.
- Can be installed vertically.
- Availability pg. 27

Wall Cabinets

Bridge Wall

Bridge Wall Cabinets

W3012	30 x 12
W3312	33 x 12
W3612	36 x 12
W3015	30 x 15
W3315	33 x 15
W3615	36 x 15
W3018	30 x 18
W3318	33 x 18
W3618	36 x 18
W3021	30 x 21
W3321	33 x 21
W3621	36 x 21
W3024	30 x 24
W3324	33 x 24
W3624	36 x 24



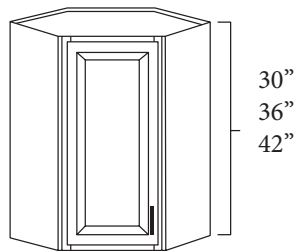
Specifications:

- 24" tall have 1 adjustable shelf.
- The remaining heights have no shelves.
- Availability pg. 26

Diagonal Corner Wall

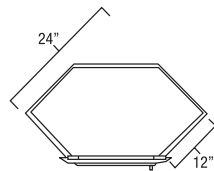
Diagonal Corner Wall Cabinets

WDC2430	24 x 30
WDC2436	24 x 36
WDC2442	24 x 42



Specifications:

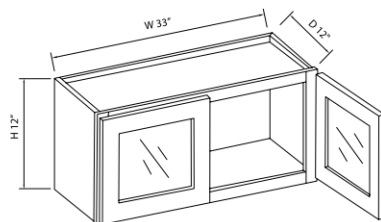
- 30" and 36" tall have 2 adjustable shelves.
- 42" tall have 3 adjustable shelves.
- Door may be replaced with corresponding diagonal glass door (see page 17).
- Availability pg. 27



Oven Stacker Wall

Diagonal Stacker Wall

DDSWOC3312	33" x 12"
------------	-----------

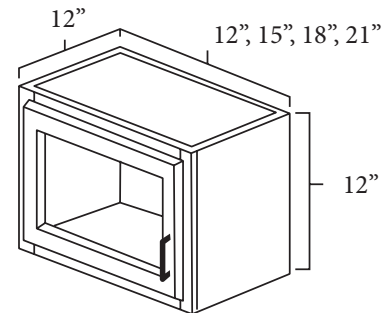


- Availability pg. 29

Single Decorative Stacker Wall (with plain glass)

Single Dec Stacker

W1212PG	12x12
W1512PG	15x12
W1812PG	18x12
W2112PG	21x12



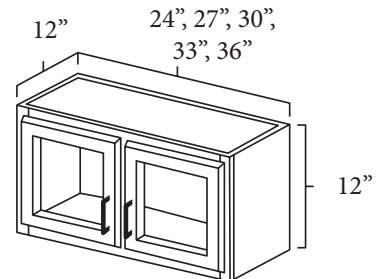
Note:

- STACKER CABINETS DO NOT LINE UP WITH THE DOORS WHEN STACKING ON THE UOC CABINET
- Availability pg. 25

Double Decorative Stacker Wall (with plain glass)

Double Dec Stacker

W2412PG	24x12
W2712PG	27x12
W3012PG	30x12
W3312PG	33x12
W3612PG	36x12

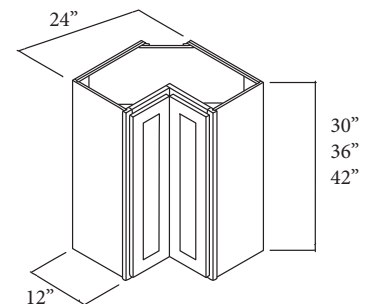


- Availability pg. 26

Easy Reach Wall*

Wall Easy Reach

WER2430	24x30
WER2436	24x36
WER2442	24x42



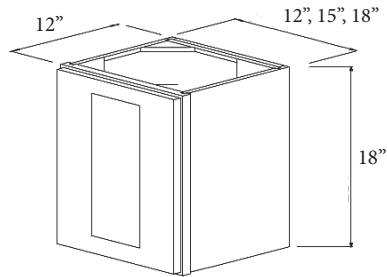
- Availability pg. 27

*Not Available in Aspen White

Single Door Wall

18" High Single Door

W1218	12x12x18
W1518	15x12x18
W1818	18x12x18

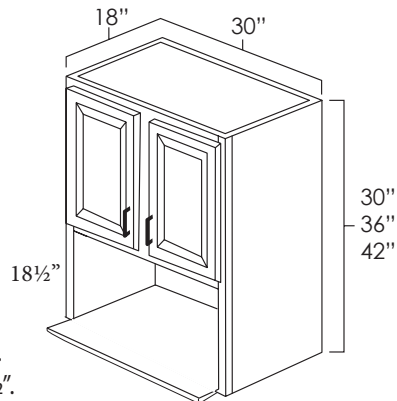


- Availability pg. 25

Microwave Wall

Microwave Wall Cab

MW3030	30x30
MW3036	30x36
MW3042	30x42



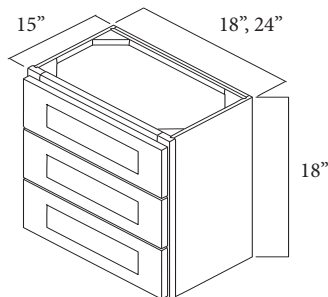
Specifications:

- For "counter" style microwaves.
- Opening width is 26-7/8" x 18-1/2".
- Butt doors on all sizes.
- Availability pg. 25

3 Drawer Wall*

Wall 3 Drawer

W3DR18	18"
W3DR24	24"



- Availability pg. 25

*Not Available in Aspen White

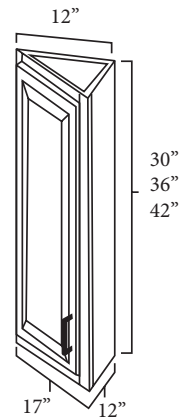
Angled End Wall

Angled End Wall Cab

WCA1230	12x30
WCA1236	12x36
WCA1242	12x42

Specifications:

- 30" and 36" wall cabinets have two adjustable shelves.
- 42" wall cabinets have three adjustable shelves.
- Availability pg. 27



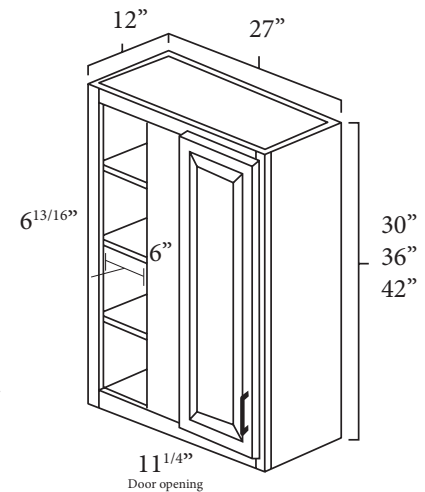
Blind Corner Wall

Blind Corner Wall Cabinets

WBC2730	27x30
WBC2736	27x36
WBC2742	27x42

Specifications:

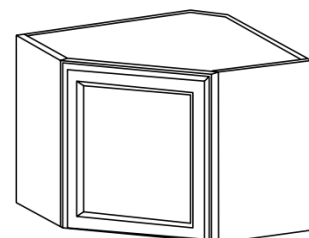
- 30" and 36" tall have 2 adjustable shelves.
- 42" tall have 3 adjustable shelves.
- Can be pulled to a max of 3" to make it cover 30"
- 6 13/16" blind opening
- 13 3/4" door width
- Availability pg. 27



Diagonal Stacker Wall

Diagonal Stacker Wall

DDSWDC2412	24"x12"
------------	---------

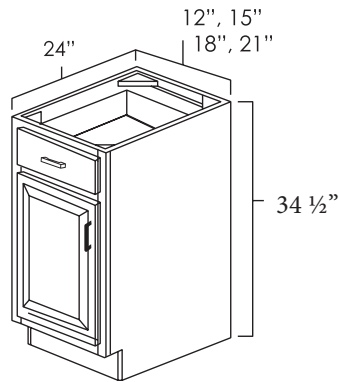


- Availability pg. 29

Single Drawer & Door Base

Single Drawer & Door

B12	12"
B15	15"
B18	18"
B21	21"



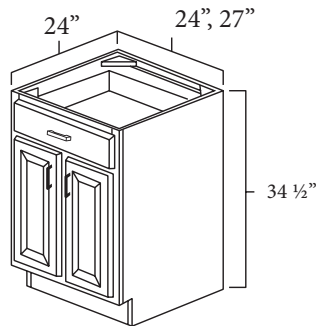
Specifications:

- 1/2 depth adjustable shelf.
- Availability pg. 27

Double Doors & Single Drawer Base

Double Drawer Single Door

B24	24"
B27	27"



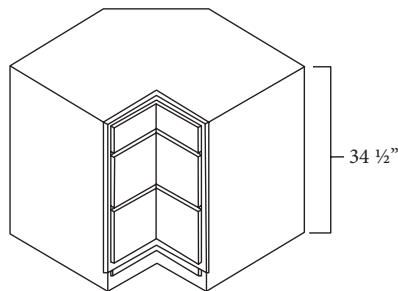
Specifications:

- 1/2 depth adjustable shelf.
- Butt doors on both 24" and 27" wide bases.
- Availability pg. 27

Corner Drawer Base

Corner Drawer Base

CDB36	36"
-------	-----



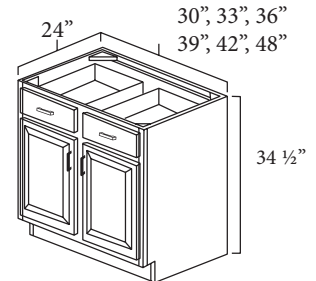
Specifications:

- This cabinet has three fully functioning, full extension drawers.
- One standard drawer on top and two deep drawers below.
- Availability pg. 28

Double Drawers & Doors Base

Double Drawer & Door

B30	30"
B33	33"
B36	36"
B39	39"
B42	42"
B48	48"



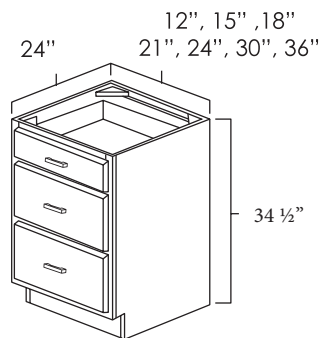
Specifications:

- 1/2 depth adjustable shelf.
- Butt doors on 30" through 36" wide bases.
- Availability pg. 27

Drawer Base

Drawer Base Cabinets

DB12	12"
DB15	15"
DB18	18"
DB21	21"
DB24	24"
DB30	30"
DB36	36"



Specifications:

- One standard drawer on top and two deep drawers below.
- Availability pg. 28

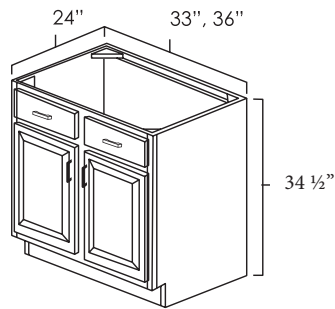


Base Cabinets

Sink Base

Sink Base Cabinet

SB33	33"
SB36	36"



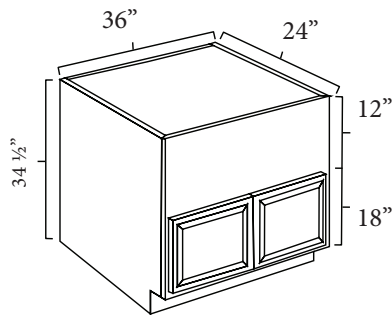
Specifications:

- For additional sizes use Standard Base cabinet (page 8).
- For additional sizes specify to be used as a Sink Base.
- Availability pg. 28

Farm Sink Base

Farm Sink Base

FSB36	36"
-------	-----



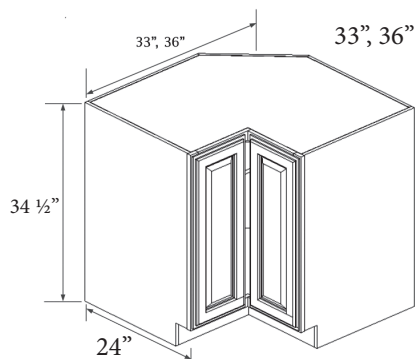
Specifications:

- 18" high cabinet doors.
- There are no shelves or drawers.
- Availability pg. 28

Easy Reach Base*

Easy Reach Base Cabinet

BER33	33"
BER36	36"



- Availability pg. 27

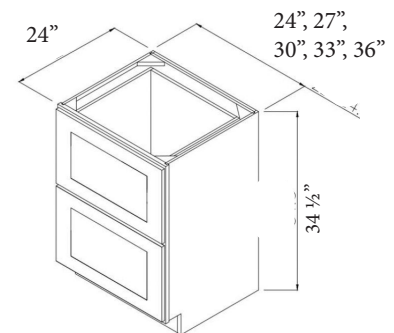
*Not Available in Aspen White



2 Drawer Base*

2 Drawer Base Cabinets

2DB24	24"
2DB27	27"
2DB30	30"
2DB33	33"
2DB36	36"



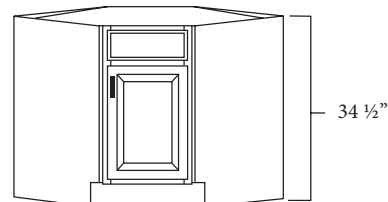
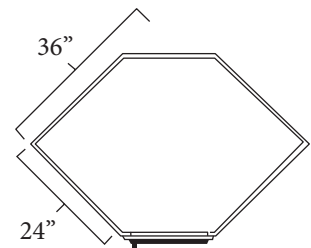
- Availability pg. 28

*Not Available in Aspen White

Diagonal Corner Sink Base

Diagonal Corner Sink

DCSB36	36"
--------	-----



Specifications:

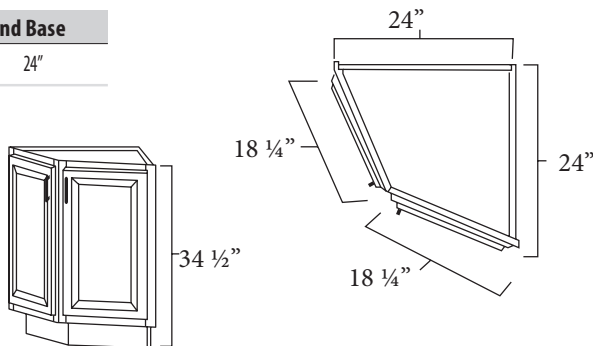
- There are no shelves or drawers in this cabinet.
- Availability pg. 28

Base Cabinets

Angled End Base

Angled End Base

BA24 24"



Specifications:

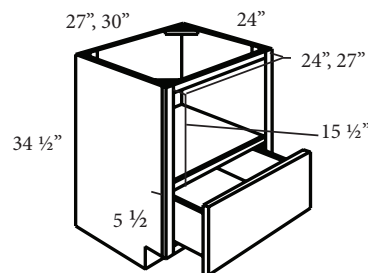
- One adjustable shelf.
- Availability pg. 28

Microwave Base

Microwave Base

BMC27 27"

BMC30 30"



Specifications:

- 1 Soft-close drawer.
- Availability pg. 28

Full Height Single Door Base

Full Height Base

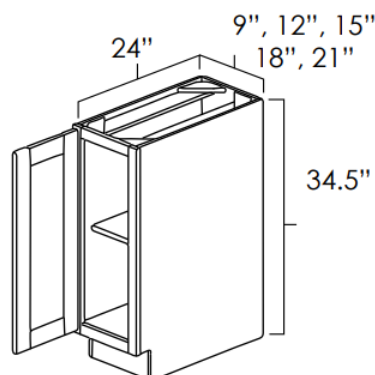
FHB9 9"

FHB12 12"

FHB15 15"

FHB18 18"

FHB21 21"



- Availability pg. 31

Full Height Double Door Base

Full Height Base

FHB24 24"

FHB27 27"

FHB30 30"

FHB33 33"

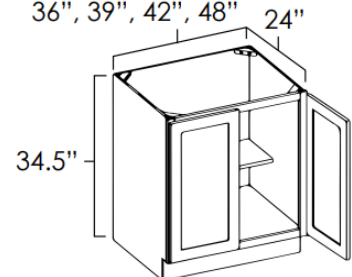
FHB36 36"

FHB39 39"

FHB42 42"

FHB48 48"

24", 27", 30", 33",
36", 39", 42", 48"



- Availability pg. 31

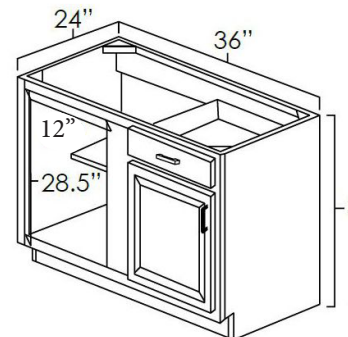
Blind Corner Base

Blind Corner Base

	Width	Door Opening	Center Stile	Full Door Width	Pull Min.	Pull Max.
BBC36	36"	12"	9"	14 9/16"	3"	9"

Specifications:

- Cannot pull farther than 6".
- 14 9/16" door overlay.
- Used as a right (R) or left (L) blind.
- Must be pulled a minimum of 3".
- Availability pg. 28

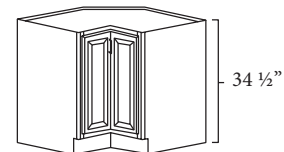


Lazy Susan Corner Base

Lazy Susan Corner

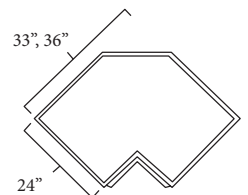
LS3312 33"

LS3612 36"



Specifications:

- Two stainless steel, height adjustable baskets are standard.
- Doors may be mounted to open right or left.



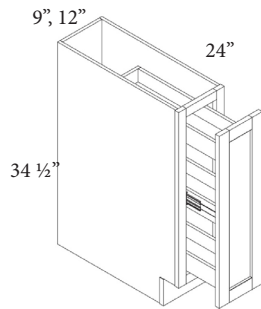
Spice Rack **Base***

Base Spice Rack

BSR9	9"
BSR12	12"

Specifications:

- Pull out spice rack
- Availability pg. 28



*Not Available in Aspen White

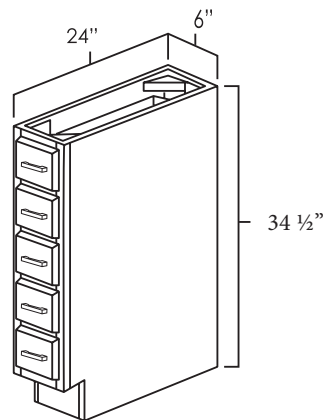
Spice Drawer **Base**

Spice Drawer Base

BSD6	6"
------	----

Specifications:

- This cabinet does not come with drawer slides.
- The cabinet can be used without the drawers as a wine rack.
- Availability pg. 28



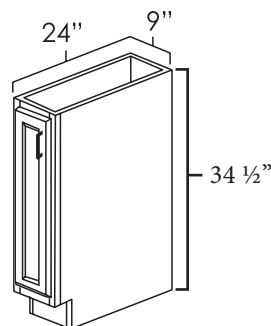
Full Height/Tray **Base**

Full Height Tray Base

TB09	9"
------	----

Specifications:

- There are no shelves in this cabinet or top drawer.
- Good for trays & cookie sheets.
- Availability pg. 28



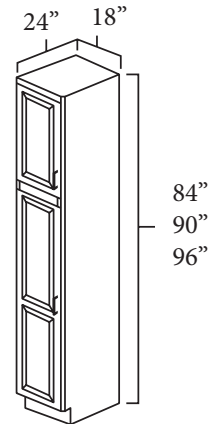
18" Wide **Utility**

18" Wide Utility

UC1884	18 x 84
UC1890	18 x 90
UC1896	18 x 96

Specifications:

- Includes 4 adjustable shelves.
- Bottom section is 54" tall.
- Toe kick attached to all heights.
- For Roll Out Tray accessories see page 13.
- Availability pg. 29



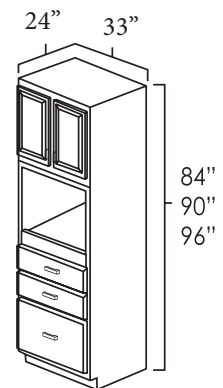
Universal Oven **Utility**

Universal Oven Cab

UOC3384	33 x 84
UOC3390	33 x 90
UOC3396	33 x 96

Specifications:

- The cut out opening measures 28 1/2" x 22".
- Can be arranged as a single oven, double oven, or oven/microwave combination by removing the necessary drawers.
- Availability pg. 28



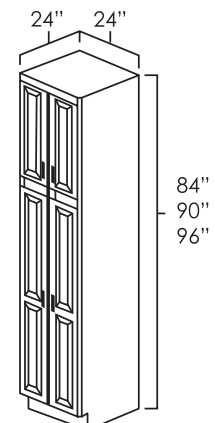
24" **Utility**

24" Wide Utility

UC2484	24 x 84
UC2490	24 x 90
UC2496	24 x 96

Specifications:

- For Roll Out Tray accessories see page 13.
- Availability pg. 28



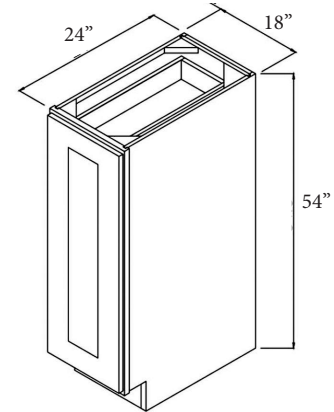
Utility Cabinets



Split Pantry Base **Utility***

Pantry Base

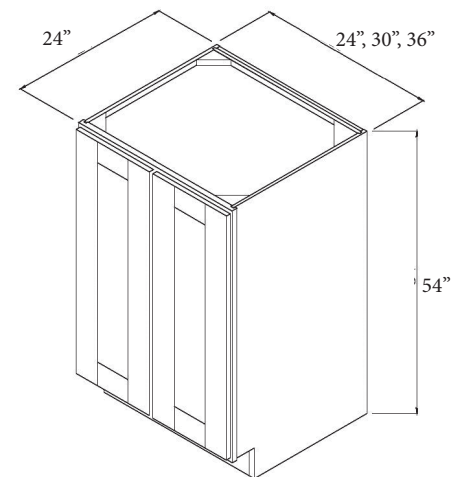
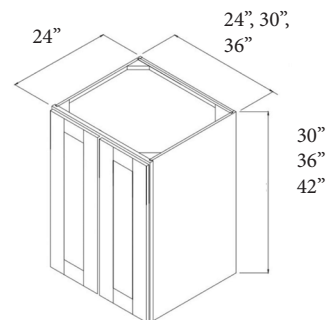
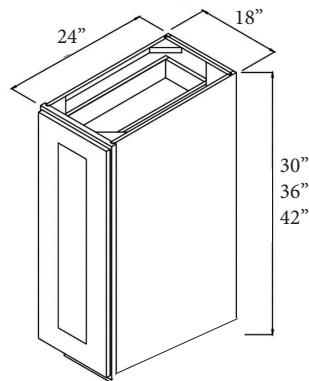
UCB1854	18 x 54
UCB2454	24 x 54
UCB3054	30 x 54
UCB3654	36 x 54



Split Pantry Wall **Utility***

Pantry Wall

W183024	18 x 30
W183624	18 x 36
W184224	18 x 42
W243024	24 x 30
W243624	24 x 36
W244224	24 x 42
W303024	30w x 30
W303624	30 x 36
W304224	30 x 42
W363024	36 x 30
W363624	36 x 36
W364224	36 x 42



- Availability pg. 26

*Not Available in Aspen White

Specifications:

- Both Wall and Base 18" Split Pantries are single door.
- All other sizes are double door.
- Availability pg. 26

NOTE:

- Top door overlay does not match base cabinet when using as a base.

*Not Available in Aspen White

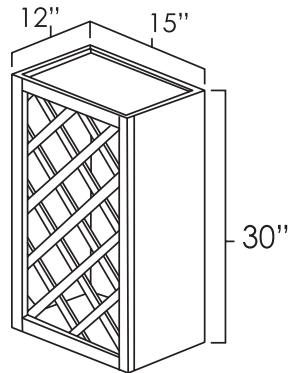
Lattice Wine Rack Accessories

Lattice Wine Rack

LWR3015 30 x 15

Specifications:

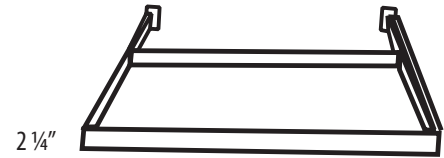
- Holds 11 bottles.
- Can install horizontally or vertically.
- Will hold 3- $\frac{3}{4}$ " diameter bottles.
- Availability pg. 28



Roll Out Trays Accessories

Roll Out Trays

ROT15	15"
ROT18	18"
ROT21	21"
ROT24	24"
ROT27	27"
ROT30	30"
ROT33	33"
ROT36	36"



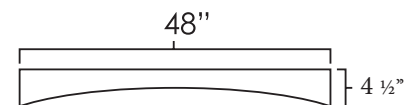
Specifications:

- Drawer glide hardware and wood finish are natural
- May be used in any 24" deep cabinet (Base, Refrigerator Wall, Pantries).
- Undermount Drawer Glides, softclose.
- Depth is 1 $\frac{3}{8}$ "
- Availability pg. 30

Arched Valance Accessories

Arched Valances

VA48 48"



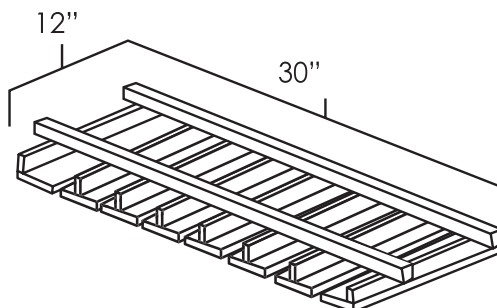
Specifications:

- Can be trimmed down to needed size.
- Availability pg. 30

Stem Glass Holders Accessories

Stem Glass Holder

SGH 12 x 30



Specifications:

- Solid wood.
- Mounts to bottom of wall cabinet.
- Can be cut to fit smaller cabinets.
- Fitted to mount under any 30" wide standard, stacker, or bridge wall cabinet.
- Holds 6 rows of glasses (18 standard size wine glasses)
- Availability pg. 30

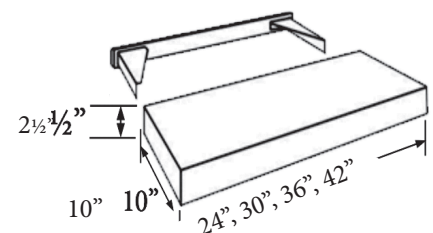
Finished Floating Shelf Accessories*

Finished Floating Shelf

FFS24	24"
FFS30	30"
FFS36	36"
FFS42	42"

- Availability pg. 28

*Not Available in Aspen White

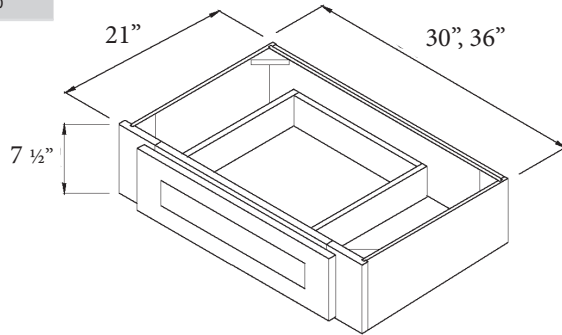


Knee Drawer Accessories

Under Counter Knee Drawer

UCD30 30"

UCD36 36"



Specifications:

- Drawer unit designed to be installed under counter to create a desk area.
- Drawers can be installed beside either vanity cabinets (21" depth) or standard base cabinets (24" depth).
- Availability pg. 30

Corbels Accessories

Corbels

CBLPN2 Small

CBLPN3 Large



Small
Width: 4 3/4"
Depth: 5"
Height: 9 1/2"



Large
Width: 6 1/4"
Depth: 6 1/2"
Height: 13 1/4"

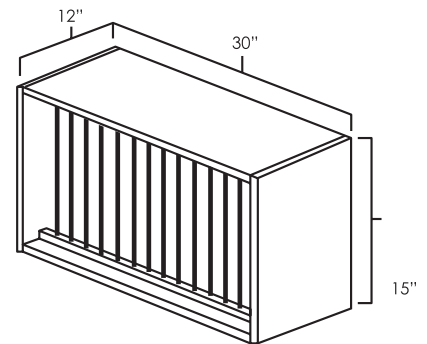
Specifications:

- Available in 2 size options
- Availability pg. 29

Plate Rack Accessories

Plate Rack

PR3015 30x15



Specifications:

- Can hold 10 plates.
- Plate rack may also be used with wall cabinets.
- Availability pg. 30

Wine Storage Cube Accessories*

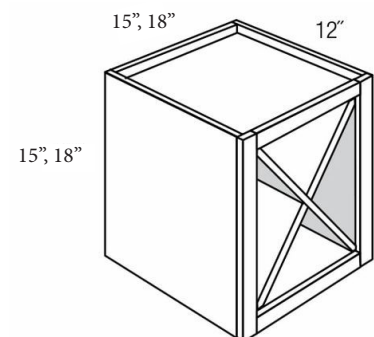
Wine Storage Cube

WSC1515 15"

WSC1818 18"

- Availability pg. 28

*Not Available in Aspen White

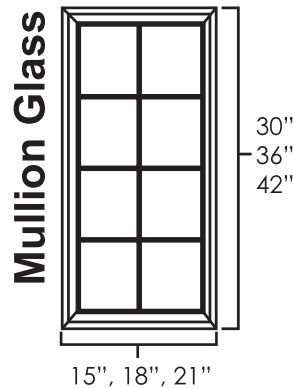


Cabinet Accessories

Single Glass Doors **Accessories****

Mullion Single Glass Door

MD1530	15 x 30
MD1830	18 x 30
MD2130	21 x 30
MD1536	15 x 36
MD1836	18 x 36
MD2136	21 x 36
MD1542	15 x 42
MD1842	18 x 36
MD2142	21 x 42
MDWDC30	30"
MDWDC36	36"
MDWDC42	42"



Specifications:

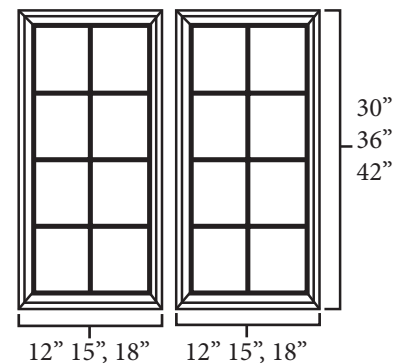
- The information following MD in the sku indicate the size / type of cabinet the door will fit.
EX: MD2442 fits a W2442.
EX: MDWDC36 fits a WDC2436.
- 30" and 36" high cabinets will have 6 panes while 42" high cabinets have 8.
- Availability pg. 29

****Not Available in Aspen White, Hickory, West Point Grey, or Winchester Grey**



Plain Glass Doors **Accessories***

Set Plain Double Glass	Plain Glass Door
PG2430 24x30	PG1530 15x30
PG2436 24x36	PG1536 15x36
PG2442 24x42	PG1542 15x42
PG3030 30x30	PG1830 18x30
PG3036 30x36	PG1836 18x36
PG3042 30x42	PG1842 18x42
PG3630 36x30	PG2130 21x30
PG3636 36x36	PG2136 21x36
PG3642 36x42	PG2142 21x42



Specifications:

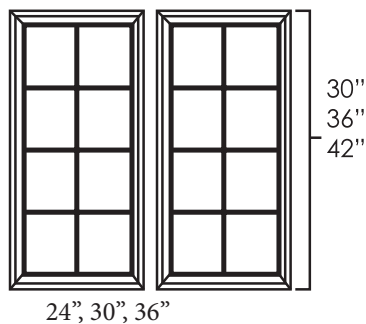
- The information following in the sku indicate the size / type of cabinet the door will fit.
EX: PG2442 fits a W2442.
- Single cabinet doors from PG1530 to PG2142
- PG2430 to PG3642 are double sets of cabinet doors
- Availability pg. 30

***Not Available in Aspen White**

Double Glass Doors **Accessories****

Mullion Glass Door

MD2430	24" x 30"
MD2436	24" x 36"
MD2442	24" x 42"
MD3030	30" x 30"
MD3036	30" x 36"
MD3042	30" x 42"
MD3630	36" x 30"
MD3636	36" x 36"
MD3642	36" x 42"



Specifications:

- 30" and 36" high cabinets have 6 panes, 42" high cabinets have 8.
- Come in set of 2
- Availability pg. 29

****Not Available in Aspen White, Hickory, West Point Grey, or Winchester Grey**

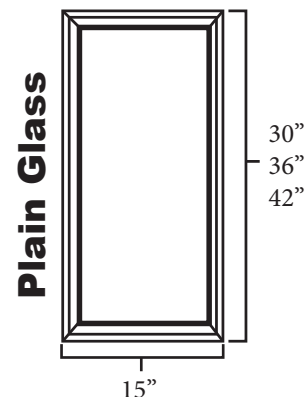
Single Glass Diagonal Doors Mullion & Plain **Accessories****

Single Glass Diagonal

PGWDC30	30"
PGWDC36	36"
PGWDC42	42"

Specifications:

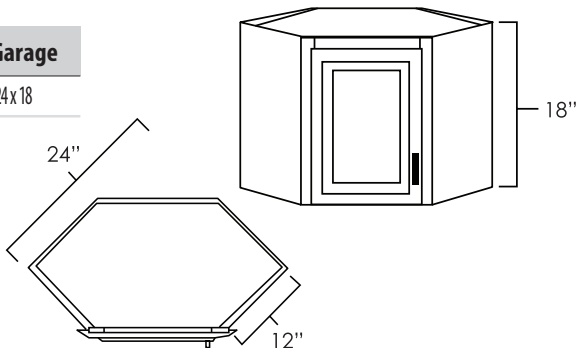
- Fits WDC cabinet 30, 36, 42 heights
- Availability pg. 30



Appliance Garage Accessories

Appliance Garage

AG2418 24 x 18



Specifications:

- Designed for installation on countertop.
- Fits directly below a wall diagonal corner cabinet.
- There are no shelves.
- Availability pg. 29



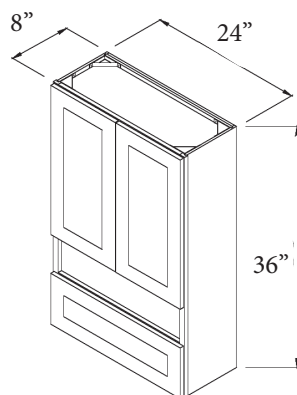
Toilet Topper Accessories*

Toilet Topper

TT2436 24 x 36

- Availability pg. 28

*Not Available in Aspen White



Drawer Base Vanity

Vanity Drawer Base

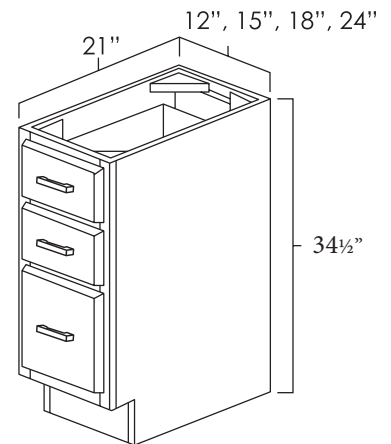
VDB1221 12"

VDB1521 15"

VDB1821 18"

VDB2121 21"

VDB2421 24"



Specifications:

- Depth: 21"
- All styles have one standard drawer on top and two drawers below.
- All three drawers are fully functioning.
- Availability pg. 32

Sink Base Vanity

Sink Base Vanity

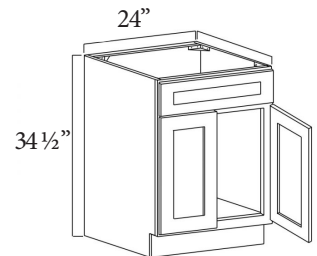
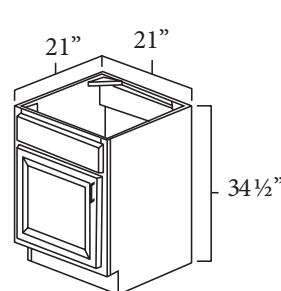
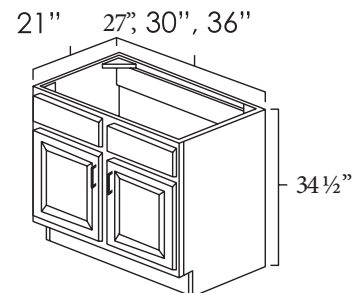
V2121 21 x 21

V2421 24 x 21

V2721 27 x 21

V3021 30 x 21

V3621 36 x 21



Specifications:

- There are no shelves or drawers in these cabinets
- Availability pg. 32

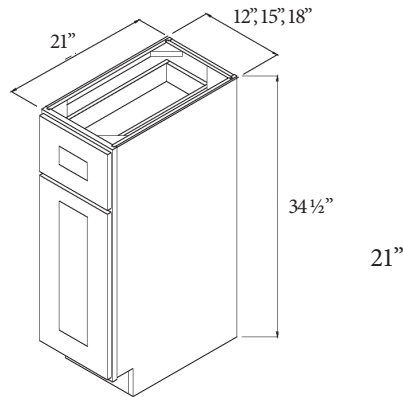
Base Vanity*

Vanity Base

VB12	12"
VB15	15"
VB18	18"

- Availability pg. 32

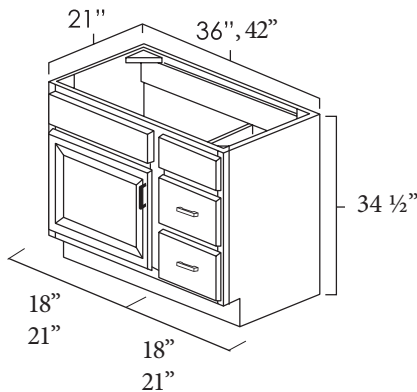
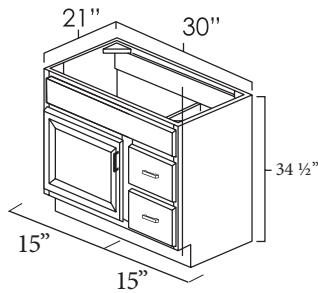
*Not Available in Aspen White



Single Door Vanity

Single Door Vanity

V3021DL	30 x 21
V3021DR	30 x 21
V3621DL	36 x 21
V3621DR	36 x 21
V4221DL	42 x 21
V4221DR	42 x 21



Specifications:

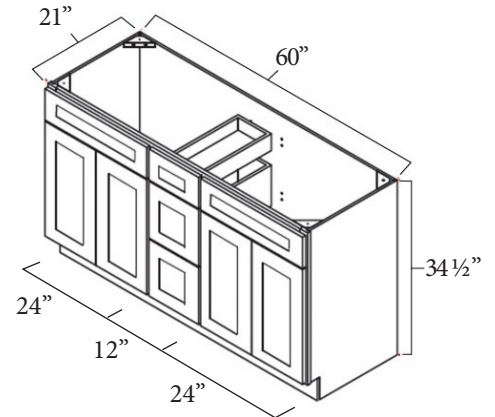
- Depth: 21".
- There are no shelves in these cabinets.
- Only the bottom two drawers are functioning.
- All styles have one standard false drawer front on top and two deep drawers below.
- WHEN INDICATING RIGHT (R) or LEFT (L), IT CORRESPONDS TO THE SIDE THE DRAWERS ARE ON WHILE LOOKING AT IT
- Availability pg. 32

Double Sink Vanity

Double Sink Vanity

VSD860 60 x 21

- Availability pg. 32

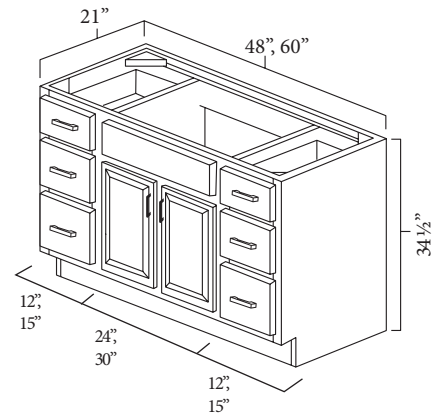


Double Door Vanity

Double Door Vanity

V4821DD 48 x 21

V6021DD 60 x 21



Specifications:

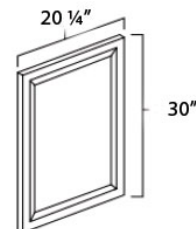
- Depth: 21".
- There are no shelves.
- All styles have two standard drawers on top and four deep drawers below.
- Butt doors on both vanity combinations.
- Availability pg. 29

Matching End Panel Vanity

Vanity Base

MVEPBH 30x20

- Availability pg. 31



Wall End Panels

Wall End Panels

WEP1542 15 x 42

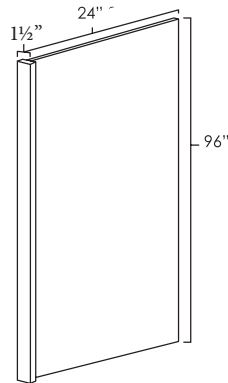
Specifications:

- 1/2" thick panel with a 3" wide wall filler on the front.
- Can be trimmed to desired height and/or width.
- May be used left or right.
- Availability pg. 31

Refrigerator End Panels

Refrigerator End Panels

REP9624 96 x 24



Specifications:

- 1/2" thick panel 1 1/2" filler.
- Trimmed to height/width.
- May be used left or right.
- Availability pg. 31

Matching Tall End Panels

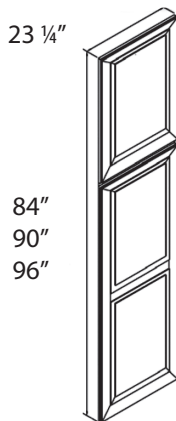
Matching Tall End Panels

MTEP84 23 1/4 x 84

MTEP90 23 1/4 x 90

MTEP96 23 1/4 x 96

23 1/4"



- Availability pg. 31

Bead Board Panels

Bead Board Panels

BBFBP4896 48 x 96

- Availability pg. 31

*Not Available in Aspen White

Base Veneer Skin & End Panels**

Base End & Veneer Skin

BS2435 24 x 34 1/2

BEP3 24 x 34 1/2

Specifications:

- BEP3 is 1/2" thick panel with a 3" wide base filler on the front.
- May be used left or right.
- BS2435 is 3/16" thick.
- Availability pg. 31

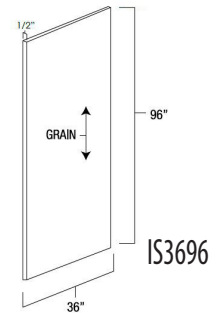
**Only Available in Platinum, Hickory, & Winchester Grey.

Island Panels

Island Panels

IS3696 36 x 96

- Availability pg. 31



Decorative End Panels

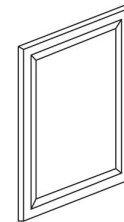
Decorative End Panels

DP1230 12 x 30

DP1236 12 x 36

DP1242 12 x 42

DP2430 24 x 30



- Availability pg. 31

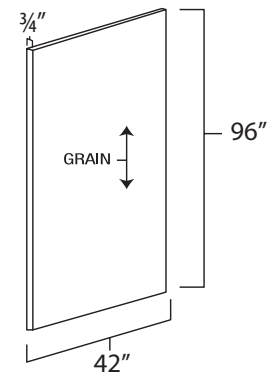
Plywood Edge Banded Panels

Edge Banded Panels

PLYEB42 42 x 96

Specifications:

- Can be used as refrigerator end panels.
- Edgebanded
- Availability pg. 31

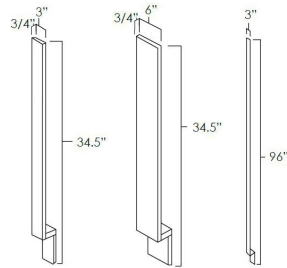


Base Fillers

Base Fillers

BF3	3 x 34 1/2
BF6	6 x 34 1/2
TF396	3 x 96

- Availability pg. 31

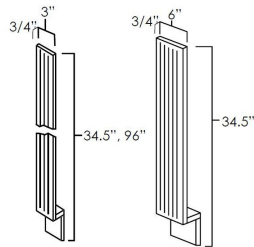


Fluted Base Fillers

Fluted base Fillers

BFF3	3 x 34 1/2
BFF6	6 x 34 1/2

- Availability pg. 31

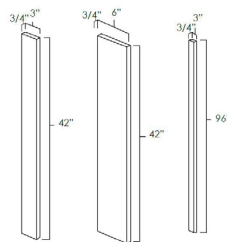


Wall Fillers

Wall Fillers

WF342	3 x 42
WF642	6 x 42
WF396	3 x 96

- Availability pg. 32



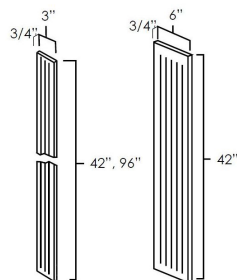
Fluted Wall Fillers*

Fluted Wall Fillers

WFF342	3 x 42
WFF642	6 x 42
WFF396	3 x 96

- Availability pg. 32

*Not Available in Aspen White



Tall Fillers

Tall Section Filler

WF696	6 x 96
-------	--------

- Availability pg. 31

Wall Skin*

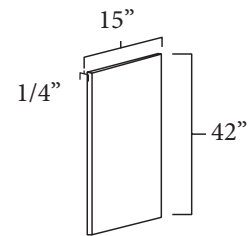
Wall Skin

WS1542	15x42
--------	-------

Specifications:

- 1/4" thick.
- Can be trimmed to desired height and/or width.
- Availability pg. 32

*Not Available in Aspen White



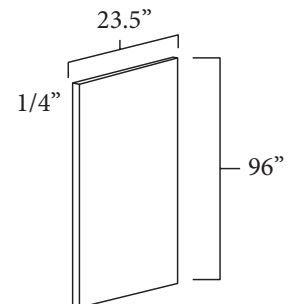
Tall Skin*

Tall Skin

TS2496	23.5x96
--------	---------

- Availability pg. 31

*Only Available in Hickory and Winchester Grey.



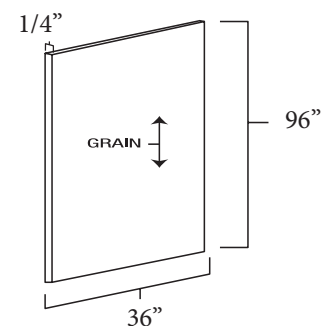
Stained Plywood

Stained Plywood

SPW	36x96
-----	-------

Specifications:

- Sold in 8ft. long sections
- 1/4" thick.
- Availability pg. 31



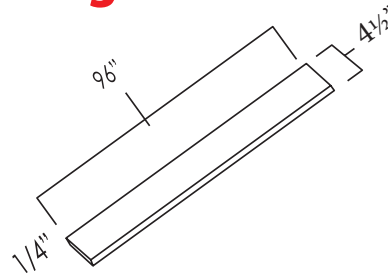
Toe Kick Moulding

Toe Kicks

TK8 8'

Specifications:

- 1/4" thick.
- Can be cut to fit.
- Availability pg. 31



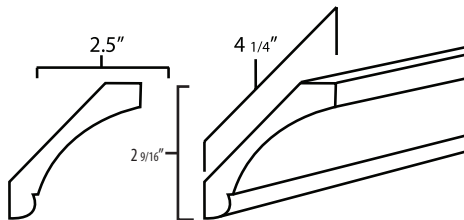
Large Cove Crown Moulding

Large Cove Crown

LVC 8'

Specifications:

- Sold in 8ft. long sections
- Height: 2-9/16"
- Availability pg. 31



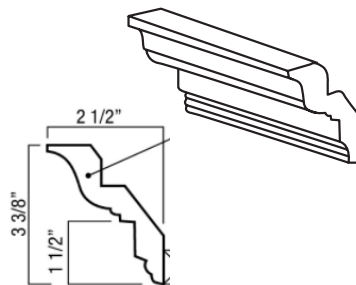
Crown Moulding

Crown Moulding

LCM8 8'

Specifications:

- Sold in 8ft sections.
- Flat section to accommodate Rope insert.
- When applying crown to full overlay cabinets a crown backer required.
- Availability pg. 31



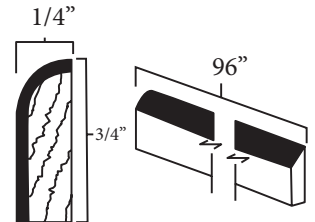
Scribe Moulding

Scribe Moulding

SM8 8'

Specifications:

- Sold in 8 ft long sections.
- Use behind Light Rail Moulding when wrapping around the side of a wall cabinet.
- Availability pg. 31



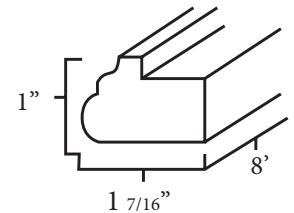
Light Rail Moulding

Light Rail Moulding

LRM8 8'

Specifications:

- Sold in 8 ft long sections.
- Availability pg. 31



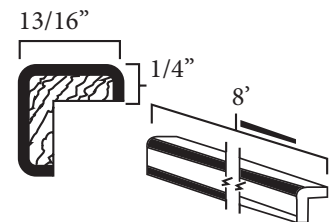
Outside Corner Moulding

Outside Corner

OCS8 8'

Specifications:

- Sold in 8ft. long sections
- Availability pg. 31

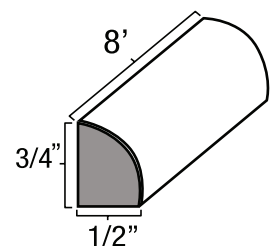


Shoe Moulding

Shoe Moulding

SHM8 8'

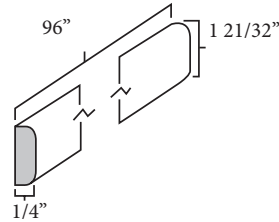
- Availability pg. 31



Batten Moulding

Batten Moulding

BM8 8'



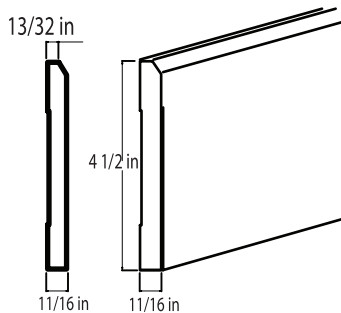
Specifications:

- Sold in 8ft. long sections
- Availability pg. 31

Decorative Base Moulding

Dec Base Moulding

DEC004 8'



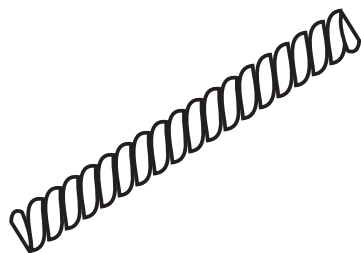
Specifications:

- Sold in 8 ft long sections.
- Availability pg. 31

Rope Insert Moulding

Rope Insert Moulding

ROPE8 8'



Specifications:

- Sold in 8 ft long sections.
- 9/16th of an inch wide.
- 1/4 inch thick.
- Crown molding insert.
- Availability pg. 31

Touch-Up Kit



Included In Kit:

- One Wax Putty Stick
- One Touch-Up Marker

Display/Sample Doors

Display/Sample Doors

DD 1 Door

KC-DDSET-9 9-Door Set



Specifications:

- Summit White Shaker
- Summit Platinum Shaker
- Hickory Shaker
- West Point Grey
- Aspen White
- Winchester Grey
- Modern Black Shaker
- Florence Sage
- Cambridge Shaker

Ashley Range Hood

Ashley Range Hood

ASH-FS3042 30x42

ASH-FS3642 36x42

Specifications:

- Available in all 9 styles as well as unfinished.



Kelsey Range Hood

Ashley Range Hood

KEL-FS3042 30x42

KEL-FS3642 36x42

Specifications:

- Available in all 9 styles as well as unfinished.



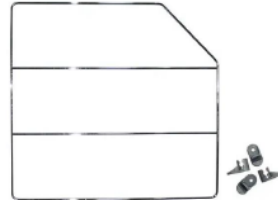
Chrome Tray Divider

Chrome Tray Divider

RS-CTD18

Specifications:

- To use with **TB09** and **WR** Cabinets 21" high and taller.
- Must be field installed

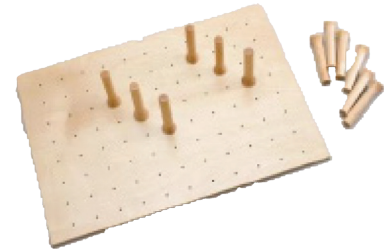


Peg Drawer Insert

Peg Drawer Insert

RS-PDS39

RS-PDS24



Specifications:

- To use with 2 Drawer Base 24 to 36 wide cabinets
- Specify the cabinet this will be used in and location of insert

Wood Lazy Susan

Wood Lazy Susan

RS-WLS

Specifications:

- INSERT ONLY** For **BER33** or **BER36**
- Must include the cost of the **BER** Cabinet



Trash Can Pullout

Trash Can Pullouts

RWC-TCK-DOUBLE 35QT

RWC-TCK-SINGLE 35QT



Specifications:

- Double 35QT Frame with Slides
- Single 35QT Frame with Slides

Wood Cutlery Divider

Wood Cutlery Divider

RS-WCD15-18

RS-WCD21-24

Specifications:

- Select either **WCD15-18** or **WCD21** to match the cabinet width for install.



Wood Tiered Cutlery Divider

Wood Tiered Cutlery Divider

RS-WTCD15

RS-WTCD18

RS-WTCD21

RS-WTCD24



Specifications:

- Select the correct size to correspond with the cabinet width.

Wood Super Susan

Wood Super Susan

RS-WSS

Specifications:

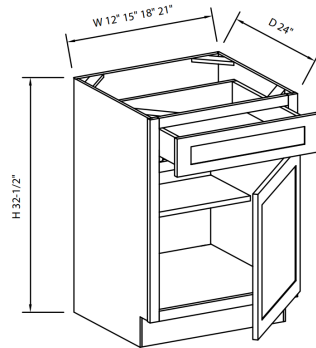
- To be used in the **BER33** or **BER36**
- Sold and priced per shelf



Single Drawer & Door ADA Base

Single Drawer & Door

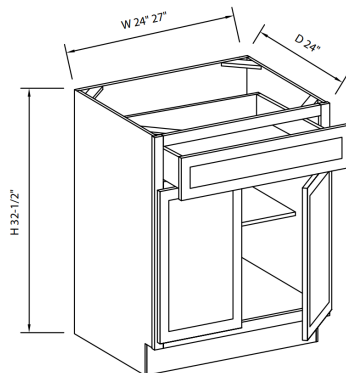
ADAB12	12"
ADAB15	15"
ADAB18	18"
ADAB21	21"



Double Doors & Single Drawer ADA Base

Double Drawer Single Door

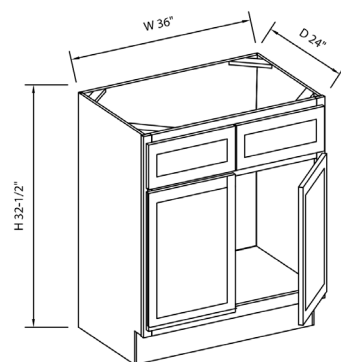
ADAB24	24"
ADAB27	27"



Sink ADA Base

Sink Base Cabinet

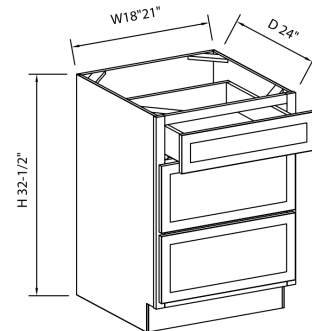
ADAB36	36"
--------	-----



Drawer ADA Base

Drawer Base Cabinets

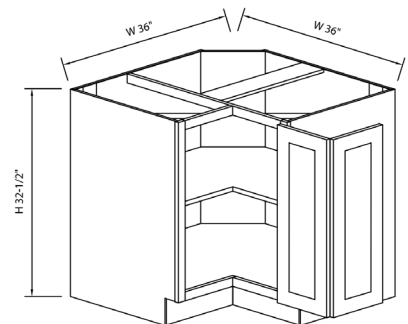
ADADB18	18"
ADADB21	21"



Lazy Susan Corner ADA Base

Lazy Susan Corner

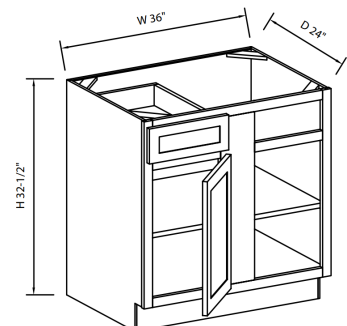
ADALS3612	36"
-----------	-----



Blind Corner ADA Base

Blind Corner Base

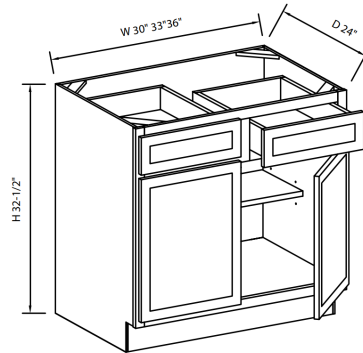
ADABBC36	Width	Door Opening	Center Stile	Full Door Width	Pull Min.	Pull Max.
	36"	12"	9"	14 9/16"	3"	9"



Double Doors & Drawers **ADA Base**

Double Drawer & Door

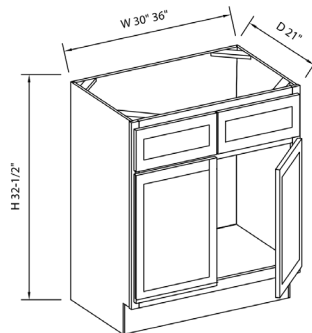
ADAB30	30"
ADAB33	33"
ADAB36	36"
ADAB39	39"
ADAB42	42"
ADAB48	48"



Vanity Sink **ADA Base**

Vanity Base Cabinet

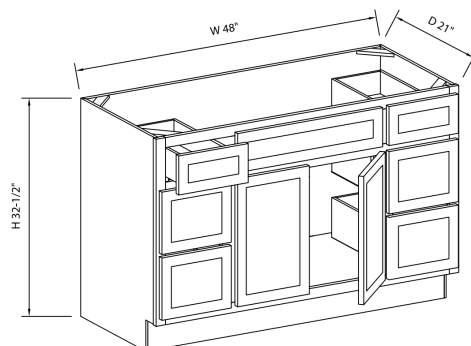
ADAV30	30 x 21
ADAV36	36 x 21



Double Door Vanity Sink **ADA Base**

Double Door Vanity

ADAV4821DD	48 x 21
------------	---------



		White Shaker	Platinum Shaker	Hickory Shaker	West Point Grey	Aspen White Shaker	Winchester Grey	Modern Black Shaker	Florence Sage	Cambridge Shaker
Wall Cabinets		WS	PS	HS	WP	ASP	WG	MBS	FS	CS
W3024	Wall Cab 2D 30" x 24" (pg. 8)	•	•	•	•	•	•	•	•	•
W3030	Wall Cab 2D 30" x 30" (pg. 7)	•	•	•	•	•	•	•	•	•
W3036	Wall Cab 2D 30" x 36" (pg. 7)	•	•	•	•	•	•	•	•	•
W3042	Wall Cab 2D 30" x 42" (pg. 7)	•	•	•	•	•	•	•	•	•
W3312	Wall Cab 2D 33" x 12" (pg. 8)	•	•	•	•	•	•	•	•	•
W3312PG	Wall Cab 2D Glass 33" x 12" (pg. 8)	•	•	•	•	•	•	•	•	•
W3315	Wall Cab 2D 30" x 15" (pg. 8)	•	•	•	•	•	•	•	•	•
W3318	Wall Cab 2D 30" x 18" (pg. 8)	•	•	•	•	•	•	•	•	•
W3321	Wall Cab 2D 30" x 21" (pg. 8)	•	•	•	•	•	•	•	•	•
W3324	Wall Cab 2D 30" x 24" (pg. 8)	•	•	•	•	•	•	•	•	•
W3330	Wall Cab 2D 30" x 30" (pg. 7)	•	•	•	•	•	•	•	•	•
W3336	Wall Cab 2D 30" x 36" (pg. 7)	•	•	•	•	•	•	•	•	•
W3342	Wall Cab 2D 30" x 42" (pg. 7)	•	•	•	•	•	•	•	•	•
W3612	Wall Cab 2D 36" x 12" (pg. 8)	•	•	•	•	•	•	•	•	•
W3612PG	Wall Cab 2D Glass 36" x 12" (pg. 8)	•	•	•	•	•	•	•	•	•
W3615	Wall Cab 2D 36" x 15" (pg. 8)	•	•	•	•	•	•	•	•	•
W3618	Wall Cab 2D 36" x 18" (pg. 8)	•	•	•	•	•	•	•	•	•
W3621	Wall Cab 2D 36" x 21" (pg. 7)	•	•	•	•	•	•	•	•	•
W3624	Wall Cab 2D 36" x 24"	•	•	•	•	•	•	•	•	•
W3630	Wall Cab 2D 36" x 30" (pg. 7)	•	•	•	•	•	•	•	•	•
W3636	Wall Cab 2D 36" x 36" (pg. 7)	•	•	•	•	•	•	•	•	•
W3642	Wall Cab 2D 36" x 42" (pg. 7)	•	•	•	•	•	•	•	•	•
W3930	Wall Cab 2D 39" x 30" (pg. 7)	•	•	•	•	•	•	•	•	•
W3936	Wall Cab 2D 39" x 36" (pg. 7)	•	•	•	•	•	•	•	•	•
W3942	Wall Cab 2D 39" x 42" (pg. 7)	•	•	•	•	•	•	•	•	•
W4230	Wall Cab 2D 42" x 30" (pg. 7)	•	•	•	•	•	•	•	•	•
W4236	Wall Cab 2D 30" x 42" (pg. 7)	•	•	•	•	•	•	•	•	•
W4242	Wall Cab 2D 42" x 42" (pg. 7)	•	•	•	•	•	•	•	•	•
W243024	Upper Utility Cab 24" x 30" x 24" (pg. 14)	•	•	•	•	-	•	•	•	•
W243624	Upper Utility Cab 24" x 36" x 24" (pg. 14)	•	•	•	•	-	•	•	•	•
W244224	Upper Utility Cab 24" x 42" x 24" (pg. 14)	•	•	•	•	-	•	•	•	•
W303024	Upper Utility Cab 30" x 30" x 24" (pg. 14)	•	•	•	•	-	•	•	•	•
W303624	Upper Utility Cab 30" x 36" x 24" (pg. 14)	•	•	•	•	-	•	•	•	•
W304224	Upper Utility Cab 30" x 42" x 24" (pg. 14)	•	•	•	•	-	•	•	•	•
W363024	Upper Utility Cab 36" x 36" x 24" (pg. 14)	•	•	•	•	-	•	•	•	•
W363624	Upper Utility Cab 36" x 36" x 24" (pg. 14)	•	•	•	•	-	•	•	•	•
W364224	Upper Utility Cab 36" x 42" x 24" (pg. 14)	•	•	•	•	-	•	•	•	•

Item Code	Item Description	White Shaker	Platinum Shaker	Hickory Shaker	West Point Grey	Aspen White Shaker	Winchester Grey	Modern Black Shaker	Florence Sage	Cambridge Shaker
WS	PS	HS	WP	ASP	WG	MBS	FS	CS		
Wall Cabinets										
WBC2730	Blind Corner Wall Cab 1D 27" x 30" (pg. 9)	•	•	•	•	•	•	•	•	•
WBC2736	Blind Corner Wall Cab 1D 27" x 36" (pg. 9)	•	•	•	•	•	•	•	•	•
WBC2742	Blind Corner Wall Cab 1D 27" x 42" (pg. 9)	•	•	•	•	•	•	•	•	•
WCA1230	Wall End Angle Cab 1D 12" x 30" (pg. 9)	•	•	•	•	•	•	•	•	•
WCA1236	Wall End Angle Cab 1D 12" x 36" (pg. 9)	•	•	•	•	•	•	•	•	•
WCA1242	Wall End Angle Cab 11D 2" x 42" (pg. 9)	•	•	•	•	•	•	•	•	•
WDC2430	Diagonal Corner Wall Cab 1D 24" x 30" (pg. 8)	•	•	•	•	•	•	•	•	•
WDC2436	Diagonal Corner Wall Cab 1D 24" x 36" (pg. 8)	•	•	•	•	•	•	•	•	•
WDC2442	Diagonal Corner Wall Cab 1D 24" x 42" (pg. 8)	•	•	•	•	•	•	•	•	•
WDC42PG	Diagonal Corner Wall Cab 1D Glass 24" x 42" (pg. 8)	•	•	•	•	•	•	•	•	•
WR3315	Refrigerator Wall Cab 2D 33" x 15" x 24" (pg. 7)	•	•	•	•	•	•	•	•	•
WR3324	Refrigerator Wall Cab 2D 33" x 24" x 24" (pg. 7)	•	•	•	•	•	•	•	•	•
WR3612	Refrigerator Wall Cab 2D 33" x 15" x 24" (pg. 7)	•	•	•	•	•	•	•	•	•
WR3615	Refrigerator Wall Cab 2D 33" x 15" x 24" (pg. 7)	•	•	•	•	•	•	•	•	•
WR3618	Refrigerator Wall Cab 2D 33" x 15" x 24" (pg. 7)	•	•	•	•	•	•	•	•	•
WR3621	Refrigerator Wall Cab 2D 33" x 15" x 24" (pg. 7)	•	•	•	•	•	•	•	•	•
WR3624	Refrigerator Wall Cab 2D 33" x 15" x 24" (pg. 7)	•	•	•	•	•	•	•	•	•
WSC30	Wall Spice Cab 5DR 6" x 30" (pg. 7)	•	•	•	•	•	•	•	•	•
WER2430	Wall Easy Reach Cab 24" x 30" (pg. 8)	•	•	•	•	-	•	•	•	•
WER2436	Wall Easy Reach Cab 24" x 36" (pg. 8)	•	•	•	•	-	•	•	•	•
WER2442	Wall Easy Reach Cab 24" x 42" (pg. 8)	•	•	•	•	-	•	•	•	•
DDSWOC3312	Double Door Stacker Wall Oven Cab 33" x 12" (pg. 8)	•	•	•	•	-	•	•	•	•
DDSWDC2412	Double Door Stacker Wall Diagonal Cab 24" x 12" (pg. 9)	•	•	•	•	-	•	•	•	•

Wall Cabinet Accessories

TT2436	Toilet Topper 24" x 36" x 8" (pg. 18)	•	•	•	•	-	•	•	•	•
WSC1515	Wine Storage Cube 15" x 15" (pg. 16)	•	•	•	•	-	•	•	•	•
WSC1818	Wine Storage Cube 18" x 18" (pg. 18)	•	•	•	•	-	•	•	•	•
LWR3015	Lattice Wine Rack 15" x 30" (pg. 15)	•	•	•	•	•	•	•	•	•

Item Code	Item Description	White Shaker	Platinum Shaker	Hickory Shaker	West Point Grey	Aspen White Shaker	Winchester Grey	Modern Black Shaker	Florence Sage	Cambridge Shaker
Base Cabinets		WS	PS	HS	WP	ASP	WG	MBS	FS	CS
B12	Base Cab 1DR 1D 12" (pg. 10)	•	•	•	•	•	•	•	•	•
B15	Base Cab 1DR 1D 15" (pg. 10)	•	•	•	•	•	•	•	•	•
B18	Base Cab 1DR 1D 18" (pg. 10)	•	•	•	•	•	•	•	•	•
B21	Base Cab 1DR 1D 21" (pg. 10)	•	•	•	•	•	•	•	•	•
B24	Base Cab 1DR 1D 24" (pg. 10)	•	•	•	•	•	•	•	•	•
B27	Base Cab 1DR 1D 27" (pg. 10)	•	•	•	•	•	•	•	•	•
B30	Base Cab 1DR 1D 30" (pg. 10)	•	•	•	•	•	•	•	•	•
B33	Base Cab 1DR 1D 33" (pg. 10)	•	•	•	•	•	•	•	•	•
B36	Base Cab 1DR 1D 36" (pg. 10)	•	•	•	•	•	•	•	•	•
B39	Base Cab 1DR 1D 39" (pg. 10)	•	•	•	•	•	•	•	•	•
B42	Base Cab 1DR 1D 42" (pg. 10)	•	•	•	•	•	•	•	•	•
B48	Base Cab 1DR 1D 48" (pg. 10)	•	•	•	•	•	•	•	•	•
BER33	Base Easy Reach 33" (pg. 11)	•	•	•	•	-	•	•	•	•
BER36	Base Easy Reach 36" (pg. 11)	•	•	•	•	-	•	•	•	•
2DB24	Base Cab 2DR 24" (pg. 11)	•	•	•	•	-	•	•	•	•
2DB27	Base Cab 2DR 27" (pg. 11)	•	•	•	•	-	•	•	•	•
2DB30	Base Cab 2DR 30" (pg. 11)	•	•	•	•	-	•	•	•	•
2DB33	Base Cab 2DR 33" (pg. 11)	•	•	•	•	-	•	•	•	•
2DB36	Base Cab 2DR 36" (pg. 11)	•	•	•	•	-	•	•	•	•
B48	Base Cab 2DR 2D 48" (pg. 10)	•	•	•	•	•	•	•	•	•
BA24	Base End Angle Cab 2D 24" x 24" (pg. 12)	•	•	•	•	•	•	•	•	•
BBC36	Blind Corner Base 1DR 1D 24" x 36" (pg. 12)	•	•	•	•	•	•	•	•	•
BMC27	Base Microwave Cab 27" (pg. 12)	•	•	•	•	•	•	•	•	•
BMC30	Base Microwave Cab 30" (pg. 12)	•	•	•	•	•	•	•	•	•
BSD6	Base Spice Drawer Cab 5DR 6" (pg. 13)	•	•	•	•	•	•	•	•	•
BSR9	Base Spice Rack 9" (pg. 13)	•	•	•	•	-	•	•	•	•
BSR12	Base Spice Rack 12" (pg. 13)	•	•	•	•	-	•	•	•	•
CDB36	Corner Base Cab 3DR 36" (pg. 10)	•	•	•	•	•	•	•	•	•
DB12	Drawer Base Cab 3DR 12" (pg. 10)	•	•	•	•	•	•	•	•	•
DB15	Drawer Base Cab 3DR 15" (pg. 10)	•	•	•	•	•	•	•	•	•
DB18	Drawer Base Cab 3DR 18" (pg. 10)	•	•	•	•	•	•	•	•	•
DB21	Drawer Base Cab 3DR 21" (pg. 10)	•	•	•	•	•	•	•	•	•
DB24	Drawer Base Cab 3DR 24" (pg. 10)	•	•	•	•	•	•	•	•	•
DB30	Drawer Base Cab 3DR 30" (pg. 10)	•	•	•	•	•	•	•	•	•

		White Shaker	Platinum Shaker	Hickory Shaker	West Point Grey	Aspen White Shaker	Winchester Grey	Modern Black Shaker	Florence Sage	Cambridge Shaker
Base Cabinets		WS	PS	HS	WP	ASP	WG	MBS	FS	CS
DB36	Drawer Base Cab 3DR 36" (pg. 10)	•	•	•	•	•	•	•	•	•
DCSB36	Diagonal Corner Sink Base 1F 1D 36" (pg. 11)	•	•	•	•	•	•	•	•	•
FSB36	Farm Sink Base 2D 36" (pg. 11)	•	•	•	•	•	•	•	•	•
FHB12	Single Door Full Height Base Cab (pg. 12)	•	-	-	-	-	-	•	•	•
FHB15	Single Door Full Height Base Cab (pg. 12)	•	-	-	-	-	-	•	•	•
FHB18	Single Door Full Height Base Cab (pg. 12)	•	-	-	-	-	-	•	•	•
FHB21	Single Door Full Height Base Cab (pg. 12)	•	-	-	-	-	-	•	•	•
FHB24	Double Door Full Height Base Cab (pg. 12)	•	-	-	-	-	-	•	•	•
FHB27	Double Door Full Height Base Cab (pg. 12)	•	-	-	-	-	-	•	•	•
FHB30	Double Door Full Height Base Cab (pg. 12)	•	-	-	-	-	-	•	•	•
FHB33	Double Door Full Height Base Cab (pg. 12)	•	-	-	-	-	-	•	•	•
FHB36	Double Door Full Height Base Cab (pg. 12)	•	-	-	-	-	-	•	•	•
FHB39	Double Door Full Height Base Cab (pg. 12)	•	-	-	-	-	-	•	•	•
FHB42	Double Door Full Height Base Cab (pg. 12)	•	-	-	-	-	-	•	•	•
FHB48	Double Door Full Height Base Cab (pg. 12)	•	-	-	-	-	-	•	•	•
LS3312	Lazy Susan Corner Base 2D 33" (pg. 12)	•	•	•	•	•	•	•	•	•
LS3612	Lazy Susan Corner Base 2D 36" (pg. 12)	•	•	•	•	•	•	•	•	•
SB33	Sink Base 2F 2D 33" (pg. 11)	•	•	•	•	•	•	•	•	•
SB36	Sink Base 2F 2D 36" (pg. 11)	•	•	•	•	•	•	•	•	•
TB09	Tray Base 9" (pg. 13)	•	•	•	•	•	•	•	•	•
UCB1854	Bottom Utility Cab 18" x 54" (pg. 13)	•	•	•	•	-	•	•	•	•
UCB2454	Bottom Utility Cab 24" x 54" (pg. 13)	•	•	•	•	-	•	•	•	•
UCB3054	Bottom Utility Cab 30" x 54" (pg. 14)	•	•	•	•	-	•	•	•	•
UCB3654	Bottom Utility Cab 36" x 54" (pg. 14)	•	•	•	•	-	•	•	•	•

Utility Cabinets

UC1884	Utility Cab 2D 18" x 84" (pg. 13)	•	•	•	•	•	•	•	•	•
UC1890	Utility Cab 2D 18" x 90" (pg. 13)	•	•	•	•	•	•	•	•	•
UC1896	Utility Cab 2D 18" x 96" (pg. 13)	•	•	•	•	•	•	•	•	•
UC2484	Utility Cab 4D 24" x 84" (pg. 13)	•	•	•	•	•	•	•	•	•
UC2490	Utility Cab 4D 24" x 90" (pg. 13)	•	•	•	•	•	•	•	•	•
UC2496	Utility Cab 4D 24" x 96" (pg. 13)	•	•	•	•	•	•	•	•	•
UOC3384	Universal Oven Cab 3DR 2D 33" x 84" (pg. 13)	•	•	•	•	•	•	•	•	•
UOC3390	Universal Oven Cab 3DR 2D 33" x 90" (pg. 13)	•	•	•	•	•	•	•	•	•
UOC3396	Universal Oven Cab 3DR 2D 33" x 96" (pg. 13)	•	•	•	•	•	•	•	•	•

		White Shaker	Platinum Shaker	Hickory Shaker	West Point Grey	Aspen White Shaker	Winchester Grey	Modern Black Shaker	Florence Sage	Cambridge Shaker
Cabinet Accessories		WS	PS	HS	WP	ASP	WG	MBS	FS	CS
AG2418	Appliance Garage 1D (pg. 18)	•	•	•	•	•	•	•	•	•
CBLPN2	Small Corbel 4¾" x 5" x 9½" (pg. 16)	•	•	•	•	•	•	•	•	•
CBLPN3	Large Corbel 6¼" x 6½" x 13¼" (pg. 16)	•	•	•	•	•	•	•	•	•
LWR3015	Lattice Wine Rack 15" x 30" (pg. 15)	•	•	•	•	•	•	•	•	•
FFS24	Finished Floating Shelf 2½" x 10" x 24" (pg. 15)	•	•	•	•	-	•	•	•	•
FFS30	Finished Floating Shelf 2½" x 10" x 30" (pg. 15)	•	•	•	•	-	•	•	•	•
FFS36	Finished Floating Shelf 2½" x 10" x 36" (pg. 15)	•	•	•	•	-	•	•	•	•
FFS42	Finished Floating Shelf 2½" x 10" x 42" (pg. 15)	•	•	•	•	-	•	•	•	•
MD1530	Mullion Glass Door for W1530 15" x 30" (pg. 17)	•	•	-	-	-	-	•	•	•
MD1536	Mullion Glass Door for W1536 15" x 36" (pg. 17)	•	•	-	-	-	-	•	•	•
MD1542	Mullion Glass Door for W1542 15" x 42" (pg. 17)	•	•	-	-	-	-	•	•	•
MD1830	Mullion Glass Door for W1830 18" x 30" (pg. 17)	•	•	-	-	-	-	•	•	•
MD1836	Mullion Glass Door for W1830 18" x 36" (pg. 17)	•	•	-	-	-	-	•	•	•
MD1842	Mullion Glass Door for W1842 18" x 42" (pg. 17)	•	•	-	-	-	-	•	•	•
MD2130	Mullion Glass Door for W2130 21" x 30" (pg. 17)	•	•	-	-	-	-	•	•	•
MD2136	Mullion Glass Door for W2136 21" x 36" (pg. 17)	•	•	-	-	-	-	•	•	•
MD2142	Mullion Glass Door for W2142 21" x 42" (pg. 17)	•	•	-	-	-	-	•	•	•
MD2430	Mullion Glass Door for W2430 24" x 30" (pg. 17)	•	•	-	-	-	-	•	•	•
MD2436	Mullion Glass Door for W2436 24" x 36" (pg. 17)	•	•	-	-	-	-	•	•	•
MD2442	Mullion Glass Door for W2442 24" x 42" (pg. 17)	•	•	-	-	-	-	•	•	•
MD3030	Mullion Glass Door for W3030 30" x 30" (pg. 17)	•	•	-	-	-	-	•	•	•
MD3036	Mullion Glass Door for W3036 30" x 36" (pg. 17)	•	•	-	-	-	-	•	•	•
MD3042	Mullion Glass Door for W3042 30" x 42" (pg. 17)	•	•	-	-	-	-	•	•	•
MD3630	Mullion Glass Door for W3630 36" x 30" (pg. 17)	•	•	-	-	-	-	•	•	•
MD3636	Mullion Glass Door for W3636 26" x 36" (pg. 17)	•	•	-	-	-	-	•	•	•
MD3642	Mullion Glass Door for W3642 36" x 42" (pg. 17)	•	•	-	-	-	-	•	•	•
MDWDC30	Mullion Glass Door for WDC2430 24" x 30" (pg. 17)	•	•	-	-	-	-	•	•	•
MDWDC36	Mullion Glass Door for WDC2436 24" x 36" (pg. 17)	•	•	-	-	-	-	•	•	•
MDWDC42	Mullion Glass Door for WDC2442 24" x 42" (pg. 17)	•	•	-	-	-	-	•	•	•

Cabinet Accessories

		White Shaker	Platinum Shaker	Hickory Shaker	West Point Grey	Aspen White Shaker	Winchester Grey	Modern Black Shaker	Florence Sage	Cambridge Shaker
		WS	PS	HS	WP	ASP	WG	MBS	FS	CS
PG1530	Plain Glass Door for W1530 15" x 30" (pg. 17)	•	•	•	•	-	•	•	•	•
PG1536	Plain Glass Door for W1536 15" x 36" (pg. 17)	•	•	•	•	-	•	•	•	•
PG1542	Plain Glass Door for W1542 15" x 42" (pg. 17)	•	•	•	•	-	•	•	•	•
PG1830	Plain Glass Door for W1830 18" x 30" (pg. 17)	•	•	•	•	-	•	•	•	•
PG1836	Plain Glass Door for W1836 18" x 36" (pg. 17)	•	•	•	•	-	•	•	•	•
PG1842	Plain Glass Door for W1842 18" x 42" (pg. 17)	•	•	•	•	-	•	•	•	•
PG2130	Plain Glass Door for W2130 21" x 30" (pg. 17)	•	•	•	•	-	•	•	•	•
PG2136	Plain Glass Door for W2136 21" x 36" (pg. 17)	•	•	•	•	-	•	•	•	•
PG2142	Plain Glass Door for W2142 21" x 42" (pg. 17)	•	•	•	•	-	•	•	•	•
PG2430	Plain Glass Door for W2430 24" x 30" (pg. 17)	•	•	•	•	-	•	•	•	•
PG2436	Plain Glass Door for W2436 24" x 36" (pg. 17)	•	•	•	•	-	•	•	•	•
PG2442	Plain Glass Door for W2442 24" x 42" (pg. 17)	•	•	•	•	-	•	•	•	•
PG3030	Plain Glass Door for W3030 30" x 30" (pg. 17)	•	•	•	•	-	•	•	•	•
PG3036	Plain Glass Door for W3036 30" x 36" (pg. 17)	•	•	•	•	-	•	•	•	•
PG3042	Plain Glass Door for W3042 30" x 42" (pg. 17)	•	•	•	•	-	•	•	•	•
PG3630	Plain Glass Door for W3630 36" x 30" (pg. 17)	•	•	•	•	-	•	•	•	•
PG3636	Plain Glass Door for W3636 36" x 36" (pg. 17)	•	•	•	•	-	•	•	•	•
PG3642	Plain Glass Door for W3642 36" x 42" (pg. 17)	•	•	•	•	-	•	•	•	•
PGWDC30	Glass Door Set for WDC2430 24" x 30" (pg. 17)	•	•	•	•	•	•	•	•	•
PGWDC36	Glass Door Set for WDC2436 24" x 36" (pg. 17)	•	•	•	•	•	•	•	•	•
PGWDC42	Glass Door Set for WDC2442 24" x 42" (pg. 17)	•	•	•	•	•	•	•	•	•
PR3015	Wall Plate Rack 30" x 15" (pg. 16)	•	•	•	•	•	•	•	•	•
ROT15	Universal Roll Out Tray 15" (pg. 15)	•	•	•	•	•	•	•	•	•
ROT18	Universal Roll Out Tray 18" (pg. 15)	•	•	•	•	•	•	•	•	•
ROT21	Universal Roll Out Tray 21" (pg. 15)	•	•	•	•	•	•	•	•	•
ROT24	Universal Roll Out Tray 24" (pg. 15)	•	•	•	•	•	•	•	•	•
ROT27	Universal Roll Out Tray 27" (pg. 15)	•	•	•	•	•	•	•	•	•
ROT30	Universal Roll Out Tray 30" (pg. 15)	•	•	•	•	•	•	•	•	•
ROT33	Universal Roll Out Tray 33" (pg. 15)	•	•	•	•	•	•	•	•	•
ROT36	Universal Roll Out Tray 36" (pg. 15)	•	•	•	•	•	•	•	•	•
SGH	Wall Stem Glass Holder 12" x 30" (pg. 15)	•	•	•	•	•	•	•	•	•
TUK	Touch-Up Kit (pg. 23)	•	•	•	•	•	•	•	•	•
UCD30	Under Counter Knee Drawer 30" x 21" (pg. 16)	•	•	•	•	•	•	•	•	•
UCD36	Under Counter Knee Drawer 36" x 21" (pg. 16)	•	•	•	•	•	•	•	•	•
VA48	Arched Valance 4½" x 48" (pg. 15)	•	•	•	•	•	•	•	•	•
RWC-TCK-DOUBLE	Double Trash Can Pull Out 35QT (pg. 23)	•	•	•	•	•	•	•	•	•
RWC-TCK-SINGLE	Single Trash Can Pull Out 35QT (pg. 23)	•	•	•	•	•	•	•	•	•

Item Code	Item Description	White Shaker	Platinum Shaker	Hickory Shaker	West Point Grey	Aspen White Shaker	Winchester Grey	Modern Black Shaker	Florence Sage	Cambridge Shaker
Panels, Fillers, & Moulding		WS	PS	HS	WP	ASP	WG	MBS	FS	CS
BS2435	Base Skin Veneer Panel ¼" x 23¼" x 34½" (pg. 20)	-	•	•	-	-	•	-	-	-
BEP3	Base End Panel 24" x 34½" (pg. 20)	•	•	•	•	•	•	•	•	•
BF3	Base Filler 3" x 34½" (pg. 21)	•	•	•	•	•	•	•	•	•
BF6	Base Filler 6" x 34½" (pg. 21)	•	•	•	•	•	•	•	•	•
BFF3	Fluted Base Filler 3" x 34½" (pg. 21)	•	•	•	•	•	•	•	•	•
BFF6	Fluted Base Filler 6" x 34½" (pg. 21)	•	•	•	•	•	•	•	•	•
BM8	Batten Moulding 1-21/32" x 96" (pg. 23)	•	•	•	•	•	•	•	•	•
BBFBP4896	Bead Board 3/8" x 48" x 96" (pg. 20)	•	•	•	•	-	•	•	•	•
DEC004	Base Board Moulding 4½" x 96" (pg. 23)	•	•	•	•	•	•	•	•	•
DP1230	Decorative Panel 12" x 30" (pg. 20)	•	•	•	•	•	•	•	•	•
DP1236	Decorative Panel 12" x 36" (pg. 20)	•	•	•	•	•	•	•	•	•
DP1242	Decorative Panel 12" x 42" (pg. 20)	•	•	•	•	•	•	•	•	•
DP2430	Decorative Panel 24" x 30" (pg. 20)	•	•	•	•	•	•	•	•	•
IS3696	Island Panel 36" x 96" (pg. 20)	•	•	•	•	•	•	•	•	•
LCM8	Large Crown Moulding 2½" x 3-3/8" x 96" (pg. 22)	•	•	•	•	•	•	•	•	•
LRM8	Light Rail Moulding 1" x 1-7/19" x 96" (pg. 22)	•	•	•	•	•	•	•	•	•
LVC	Large Cove Crown Moulding 2½" x 96" (pg. 23)	•	•	•	•	•	•	•	•	•
MTEP84	Matching Tall End Panel 23¼" x 84" (pg. 20)	•	•	•	•	•	•	•	•	•
MTEP90	Matching Tall End Panel 23¼" x 90" (pg. 20)	•	•	•	•	•	•	•	•	•
MTEP96	Matching Tall End Panel 23¼" x 96" (pg. 20)	•	•	•	•	•	•	•	•	•
MVEPBH	Matching Vanity End Panel ¾" x 20¼" x 30" (pg. 20)	•	•	•	•	•	•	•	•	•
PLYEB42	Plywood Edgebanded 4E ¾" x 42" x 96" (pg. 20)	•	•	•	•	•	•	•	•	•
OCS8	Corner Moulding 1-3/16" x 96" (pg. 22)	•	•	•	•	•	•	•	•	•
QR8	Quarter Round Moulding ¾" x ¾" x 96"	•	•	•	•	•	•	•	•	•
REP9624	Refridgerator End Panel 24" x 96" (pg. 20)	•	•	•	•	•	•	•	•	•
ROPE8	Rope Moulding ¾" x 96" (pg. 22)	•	•	•	•	•	•	•	•	•
SHM8	Shoe Moulding ½" x ¾" x 96" (pg. 22)	•	•	•	•	•	•	•	•	•
SM8	Scribe Moulding ¼" x ¾"x 96" 9pg. 22)	•	•	•	•	•	•	•	•	•
SPW	Stained Plywood 36" x 96" (pg. 21)	•	•	•	•	•	•	•	•	•
TF396	Tall Filler 3" x 96" (pg. 21)	•	•	•	•	•	•	•	•	•
TFF396	Fluted Tall Filler 3" x 96" (pg. 21)	•	•	•	•	•	•	•	•	•
TK8	Toe Kick 4½" x 96" (pg. 22)	•	•	•	•	•	•	•	•	•
TS2496	Tall Skin ¼" x 23¼" x 96" (pg. 21)	-	-	•	-	-	•	-	-	-
WEP1542	Wall End Panel 15" x 42" (pg. 20)	•	•	•	•	•	•	•	•	•
WF342	Wall Filler 3" x 42" (pg. 21)	•	•	•	•	•	•	•	•	•
WF396	Wall Filler 3" x 96" (pg. 21)	•	•	•	•	•	•	•	•	•
WF696	Wall Filler 6" x 96" (pg. 21)	•	•	•	•	•	•	•	•	•

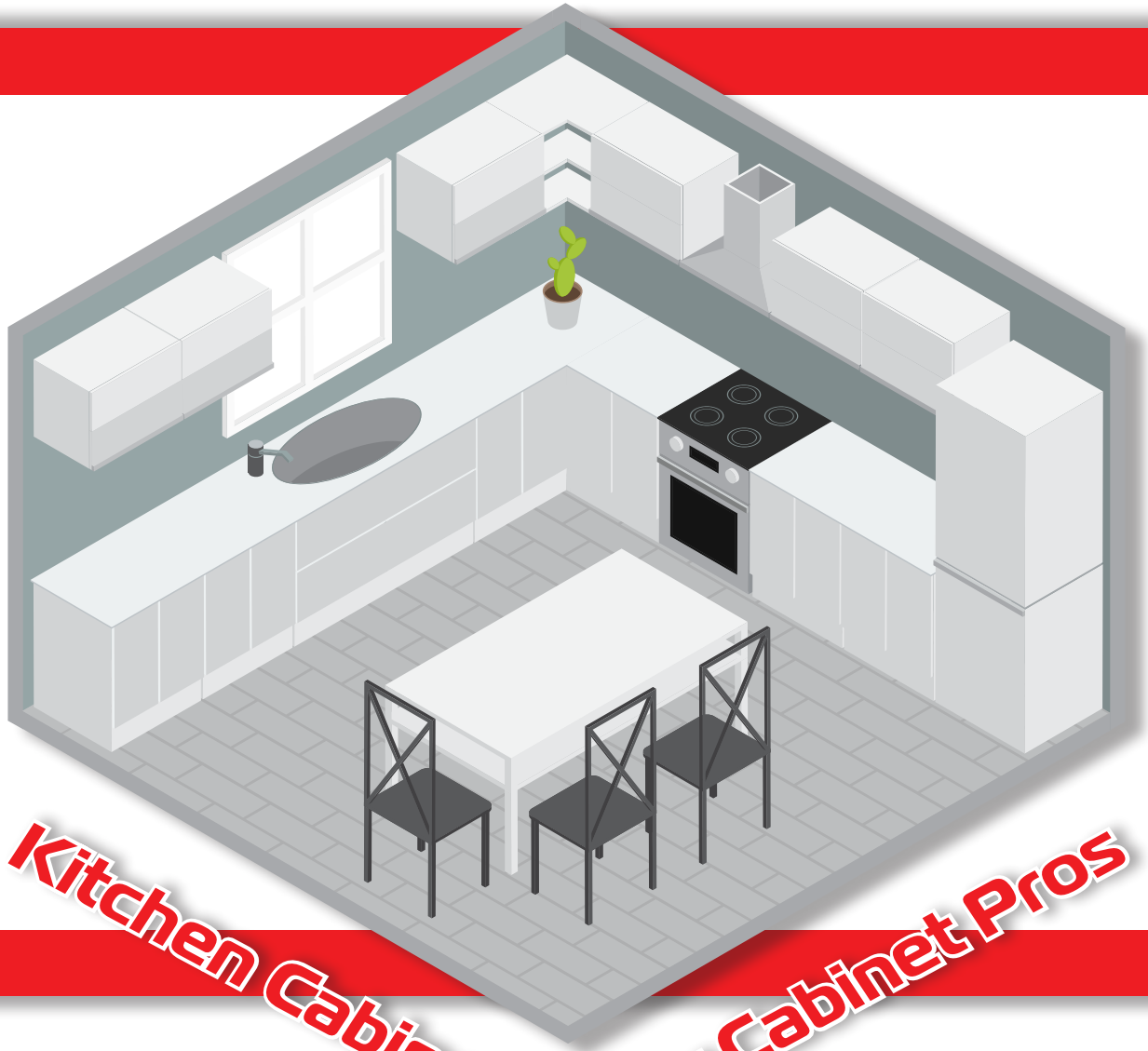
Panels, Fillers, & Moulding		White Shaker	Platinum Shaker	Hickory Shaker	West Point Grey	Aspen White Shaker	Winchester Grey	Modern Black Shaker	Florence Sage	Cambridge Shaker
		WS	PS	HS	WP	ASP	WG	MBS	FS	CS
WF642	Wall Filler 6" x 42" (pg. 21)	•	•	•	•	•	•	•	•	•
WFF342	Fluted Wall Filler 3" x 42" (pg. 21)	•	•	•	•	-	•	•	•	•
WFF396	Fluted Wall Filler 3" x 96" (pg. 21)	•	•	•	•	-	•	•	•	•
WFF642	Fluted Wall Filler 6" x 42" (pg. 21)	•	•	•	•	-	•	•	•	•
WS1542	Wall Skin Panel 15" x 42" (pg. 21)	•	•	•	•	-	•	•	•	•
Vanity Cabinets										
VB12	Vanity 1F 1D 12" (pg. 19)	•	•	•	•	-	•	•	•	•
VB15	Vanity 1F 1D 15" (pg. 19)	•	•	•	•	-	•	•	•	•
VB18	Vanity 1F 1D 18" (pg. 19)	•	•	•	•	-	•	•	•	•
V2121	Vanity 1F 1D 21" (pg. 18)	•	•	•	•	•	•	•	•	•
V2421	Vanity 1F 1D 24" (pg. 18)	•	•	•	•	•	•	•	•	•
V2721	Vanity 1F 1D 27" (pg. 18)	•	•	•	•	•	•	•	•	•
V3021	Vanity 1F 1D 30" (pg. 18)	•	•	•	•	•	•	•	•	•
V3621	Vanity 1F 1D 36" (pg. 18)	•	•	•	•	•	•	•	•	•
V3021DL	Vanity 1F 2DR 1D Left (pg. 19)	•	•	•	•	•	•	•	•	•
V3021DR	Vanity 1F 2DR 1D Right (pg. 19)	•	•	•	•	•	•	•	•	•
V3621DL	Vanity 2F 2DR 1D Left (pg. 19)	•	•	•	•	•	•	•	•	•
V3621DR	Vanity 2F 2DR 1D Right (pg. 19)	•	•	•	•	•	•	•	•	•
V4221DL	Vanity 2D 2F 2DR Left (pg. 19)	•	•	•	•	•	•	•	•	•
V4221DR	Vanity 2D 2F 2DR Right (pg. 19)	•	•	•	•	•	•	•	•	•
V4821DD	Vanity 6DR 1F 2D (pg. 19)	•	•	•	•	•	•	•	•	•
V6021DD	Vanity 6DR 1F 2D (pg. 19)	•	•	•	•	•	•	•	•	•
VDB1221	Vanity 3 Drawer Base 12" (pg. 18)	•	•	•	•	•	•	•	•	•
VDB1521	Vanity 3 Drawer Base 15" (pg. 18)	•	•	•	•	•	•	•	•	•
VDB1821	Vanity 3 Drawer Base 18" (pg. 18)	•	•	•	•	•	•	•	•	•
VDB2121	Vanity 3 Drawer Base 21" (pg. 18)	•	•	•	•	•	•	•	•	•
VDB2421	Vanity 3 Drawer Base 24" (pg. 18)	•	•	•	•	•	•	•	•	•



Item Code | Item Description

Kraftsman
CABINETRY

		White Shaker	Platinum Shaker	Hickory Shaker	West Point Grey	Aspen White Shaker	Winchester Grey	Modern Black Shaker	Florence Sage	Cambridge Shaker
		WS	PS	HS	WP	ASP	WG	MBS	FS	CS
ADA Cabinets										
ADAB12	ADA Single Door Drawer Base Cab 24" x 12" (pg. 25)	•	-	-	-	-	-	-	-	-
ADAB15	ADA Single Door Drawer Base Cab 24" x 15" (pg. 25)	•	-	-	-	-	-	-	-	-
ADAB18	ADA Single Door Drawer Base Cab 24" x 18" (pg. 25)	•	-	-	-	-	-	-	-	-
ADAB21	ADA Single Door Drawer Base Cab 24" x 21" (pg. 25)	•	-	-	-	-	-	-	-	-
ADAB24	ADA Single Door Drawer Base Cab 24" x 24" (pg. 25)	•	-	-	-	-	-	-	-	-
ADAB27	ADA Single Door Drawer Base Cab 24" x 27" (pg. 25)	•	-	-	-	-	-	-	-	-
ADAB30	ADA Single Door Drawer Base Cab 24" x 30" (pg. 25)	•	-	-	-	-	-	-	-	-
ADAB33	ADA Single Door Drawer Base Cab 24" x 33" (pg. 25)	•	-	-	-	-	-	-	-	-
ADAB36	ADA Single Door Drawer Base Cab 24" x 36" (pg. 25)	•	-	-	-	-	-	-	-	-
ADAB39	ADA Single Door Drawer Base Cab 24" x 39" (pg. 25)	•	-	-	-	-	-	-	-	-
ADAB42	ADA Single Door Drawer Base Cab 24" x 42" (pg. 25)	•	-	-	-	-	-	-	-	-
ADADB18	ADA Drawer	•	-	-	-	-	-	-	-	-
ADADB21	ADA Drawer	•	-	-	-	-	-	-	-	-
ADABBC36	ADA Blind Corner	•	-	-	-	-	-	-	-	-
ADASB36	ADA Sink Base Cabinet	•	-	-	-	-	-	-	-	-
ADALS3612	ADA Lazy Susan	•	-	-	-	-	-	-	-	-
ADAV3021	ADA Vanity Sink Base Cab	•	-	-	-	-	-	-	-	-
ADAV3621	ADA Vanity Sink Base Cab	•	-	-	-	-	-	-	-	-
ADAV4821DD	ADA DOuble Door Vanity Cab	•	-	-	-	-	-	-	-	-



Kitchen Cabinetry For Cabinet Pros

kraftsmancabinetry.com
412-506-8688